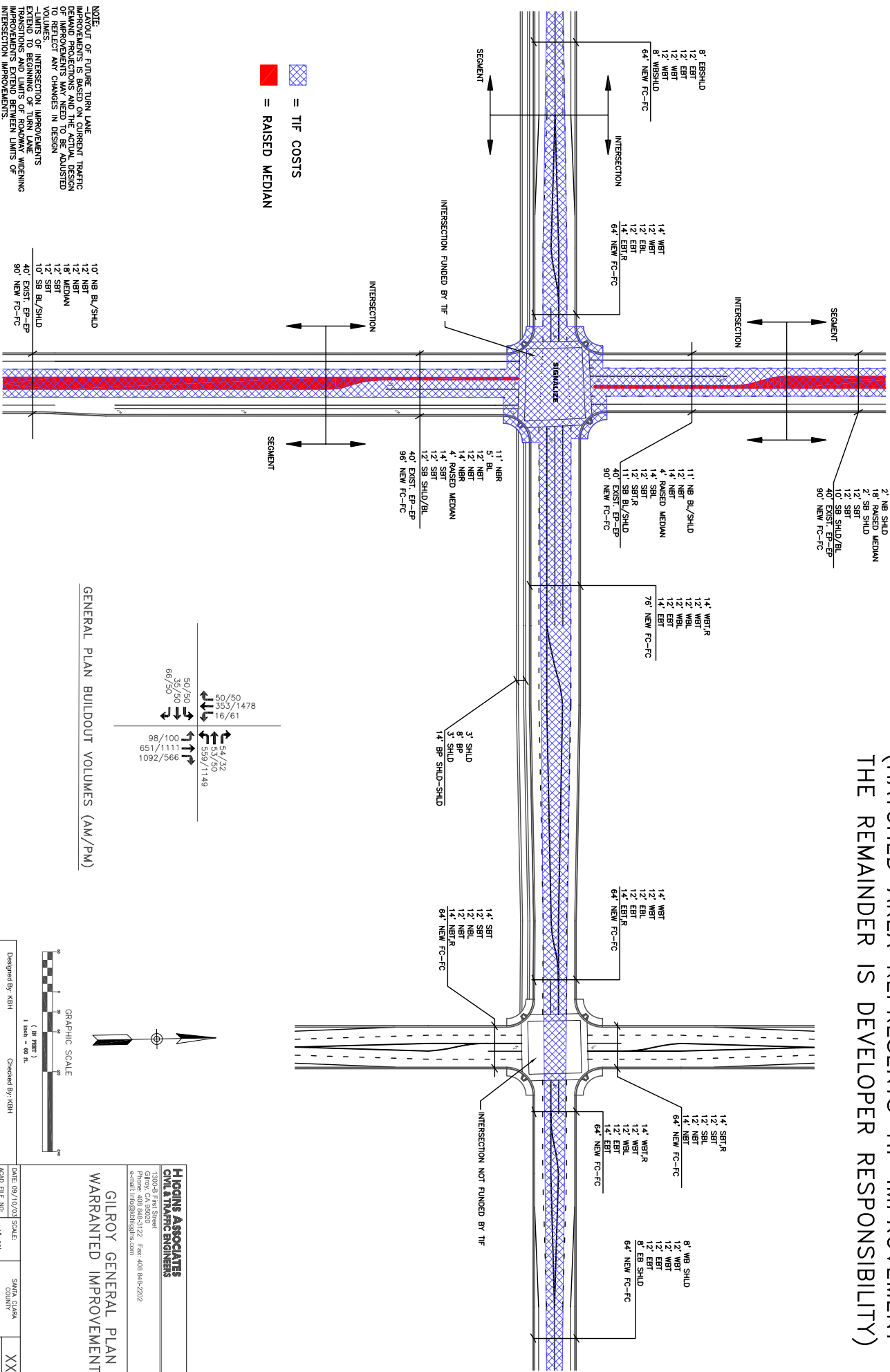
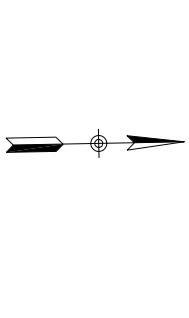
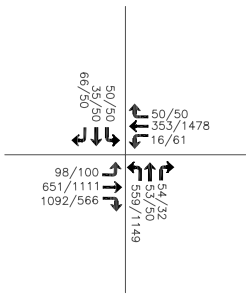


FIGURE 8: TYPICAL TRANSPORTATION IMPROVEMENT FUND PRINCIPLES (HATCHED AREA REPRESENTS TIF IMPROVEMENT THE REMAINDER IS DEVELOPER RESPONSIBILITY)



NOTE:
 - LAYOUT OF FUTURE TURN LANE IMPROVEMENTS IS BASED ON CURRENT TRAFFIC DEMAND PROJECTIONS AND THE ACTUAL DESIGN TO REFLECT ANY CHANGES IN DESIGN VOLUMES.
 - LIMITS OF INTERSECTION IMPROVEMENTS ARE THE SAME AS THE LIMITS OF ROADWAY WIDENING IMPROVEMENTS EXTEND BETWEEN LIMITS OF INTERSECTION IMPROVEMENTS.

GENERAL PLAN BUILDOUT VOLUMES (AM/PM)



HIGGINS ASSOCIATES
 CIVIL & TRAFFIC ENGINEERS
 13005 First Street
 Gilroy, CA 95020
 Phone: 408-848-3172 Fax: 408-848-2202
 Email: info@higginsassociates.com

GILROY GENERAL PLAN
 WARRANTED IMPROVEMENTS

| | | | | | |
|-----------------|------------------|------------------------|--------|--------------------|----------------|
| Design: By: KSH | Checked: By: KSH | DATE: 09/10/03 | SCALE: | SANTA CLARA COUNTY | SHEET XX OF XX |
| Drawn: By: LT | Date: 12/19/02 | Acad. FILE NO.: 02-148 | 1"=40' | CALIFORNIA | |