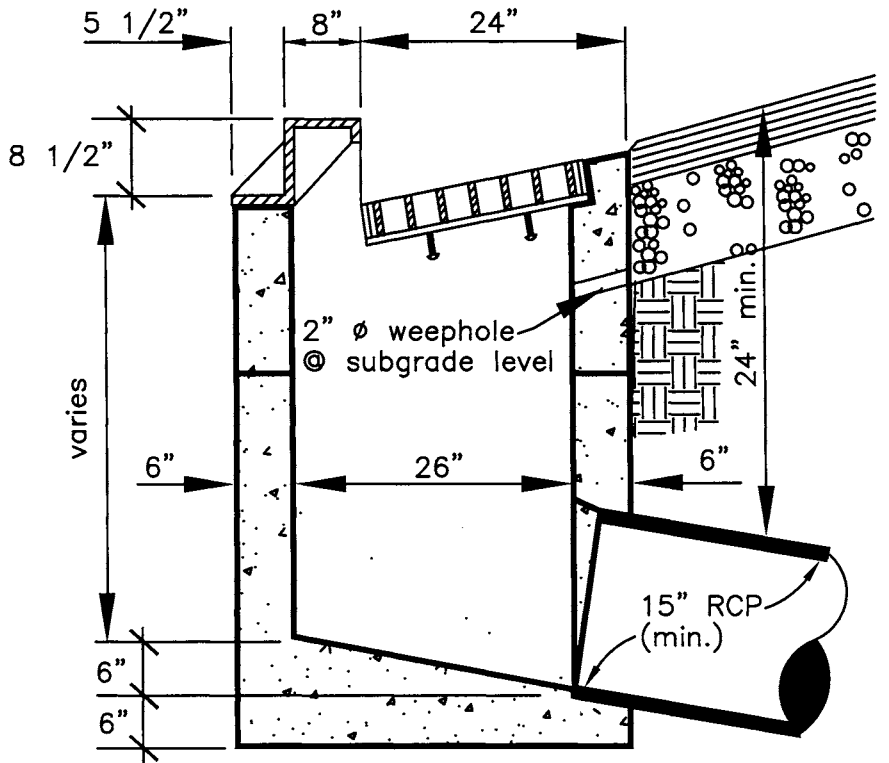


PLAN

See stm-3 for SECTION B-B



SECTION A-A

NOTE:

See grate detail STM-11

STANDARD CURB INLET (18" X 36")



APPROVED BY:

Robert S. ...
CITY ENGINEER

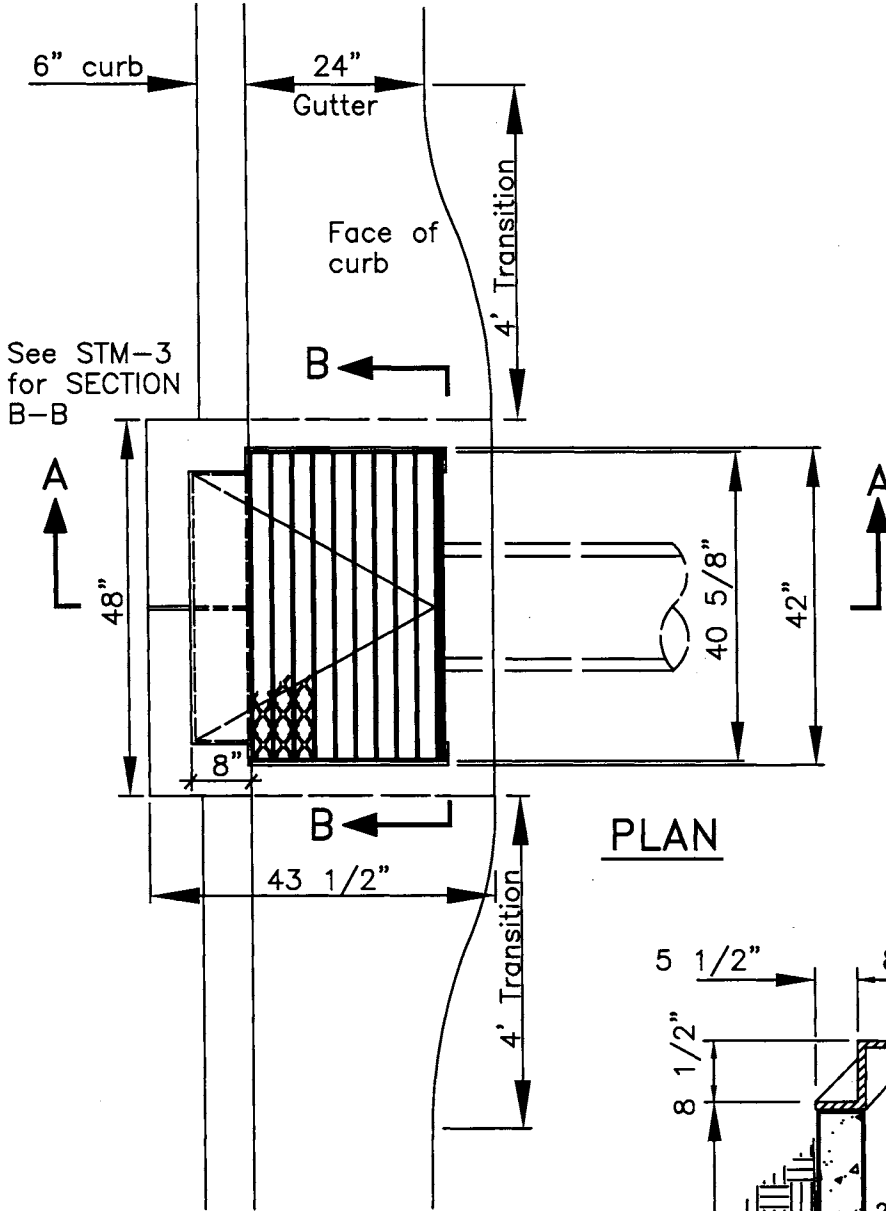
AUG 12 2005
DATE

DRAWN BY: LDL
CHECKED BY:
LAST REVISED: 10/04

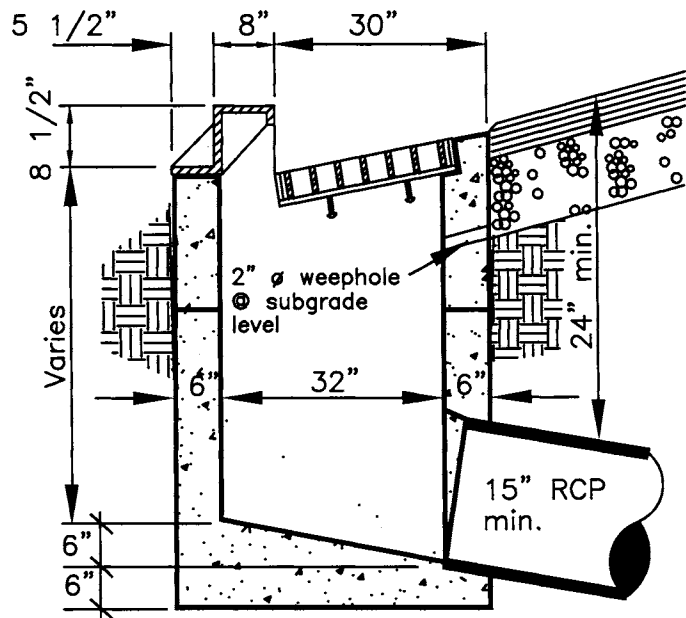
SCALE:
N.T.S.

SECTION:
STORM DRAIN

DRAWING NO.: **STM-1**



PLAN



SECTION A-A

NOTE:

See grate detail STM-12

STANDARD CURB INLET (24" X 36")



APPROVED BY:

Paul S. ...

CITY ENGINEER

AUG 12 2005

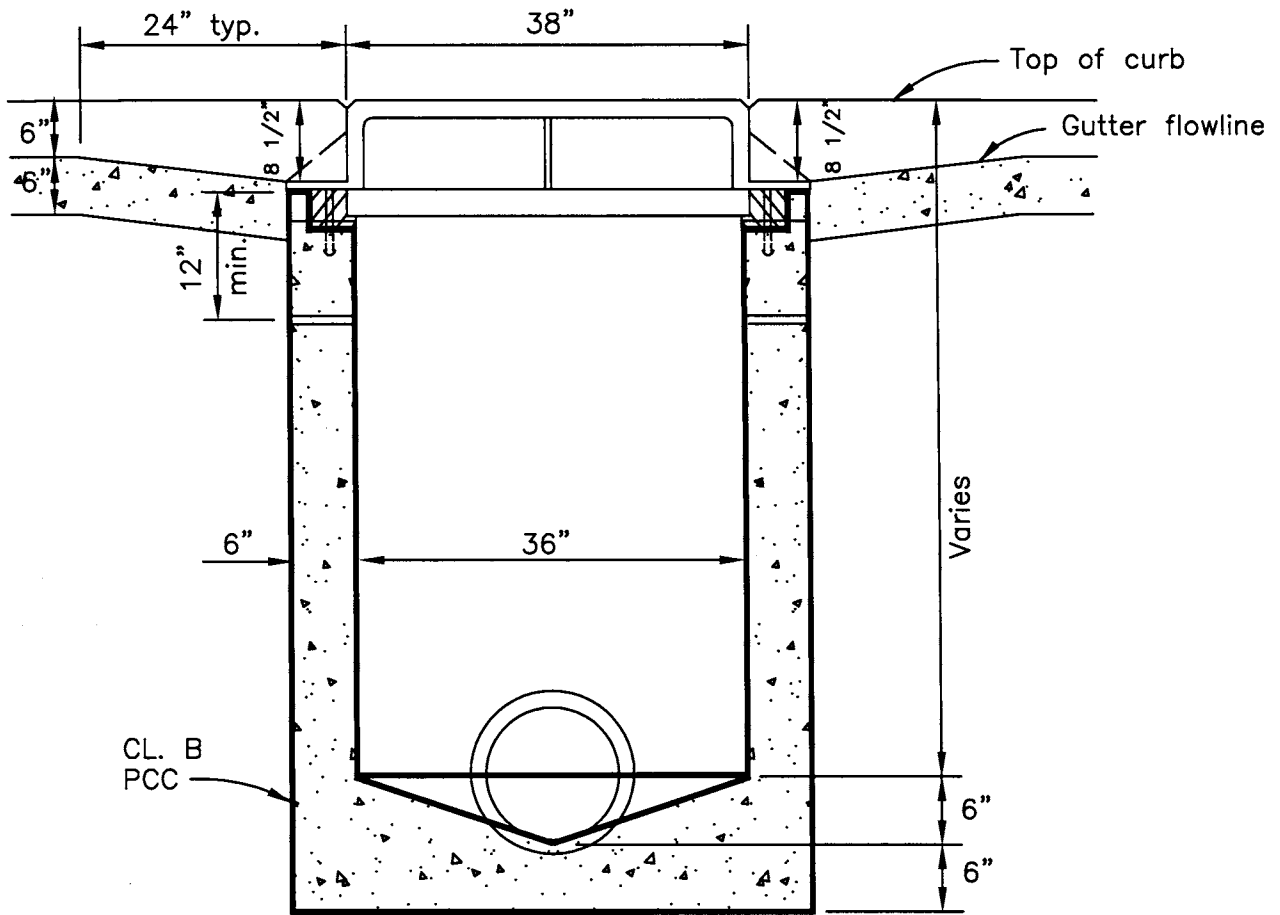
DATE

DRAWN BY: LDL
 CHECKED BY:
 LAST REVISED: 10/04

SCALE:
 N.T.S.

SECTION:
STORM DRAIN

DRAWING NO.: **STM-2**



SECTION B-B

STANDARD CURB INLET

DRAWN BY: LDL	SCALE:
CHECKED BY:	N.T.S.
LAST REVISED: 10/04	



APPROVED BY:

Paul S. ...

CITY ENGINEER

AUG 12 2005

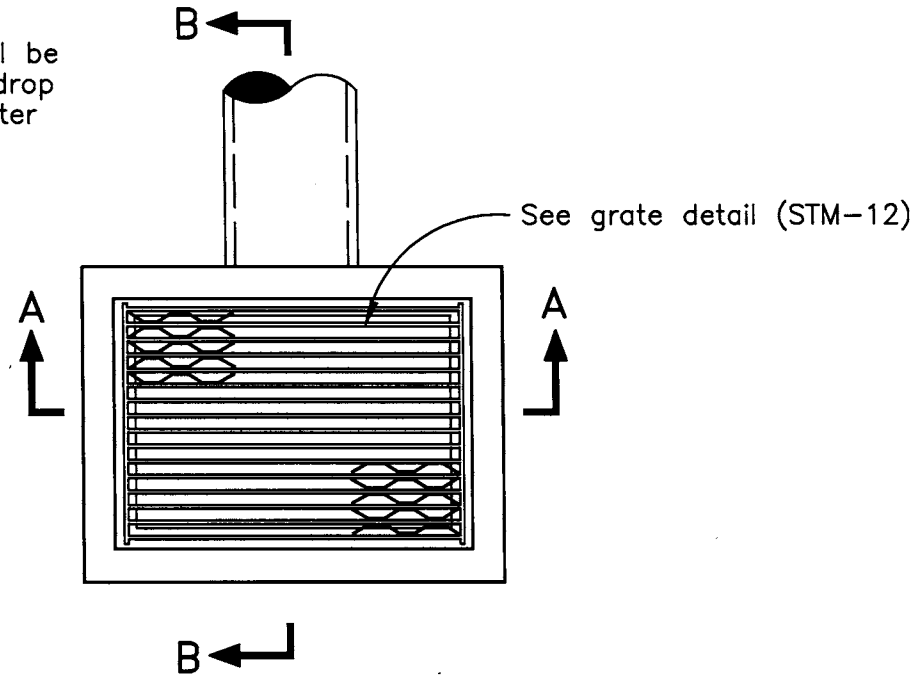
DATE

SECTION:
STORM DRAIN

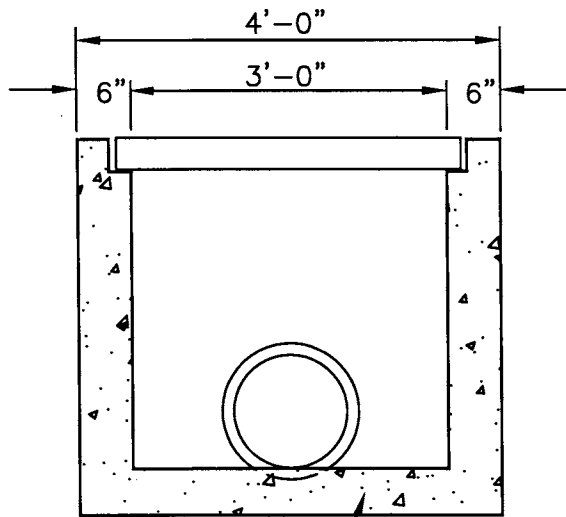
DRAWING NO.: **STM-3**

NOTE:

Reinforcing steel shall be required in walls of drop inlets which are greater than 6' in depth.

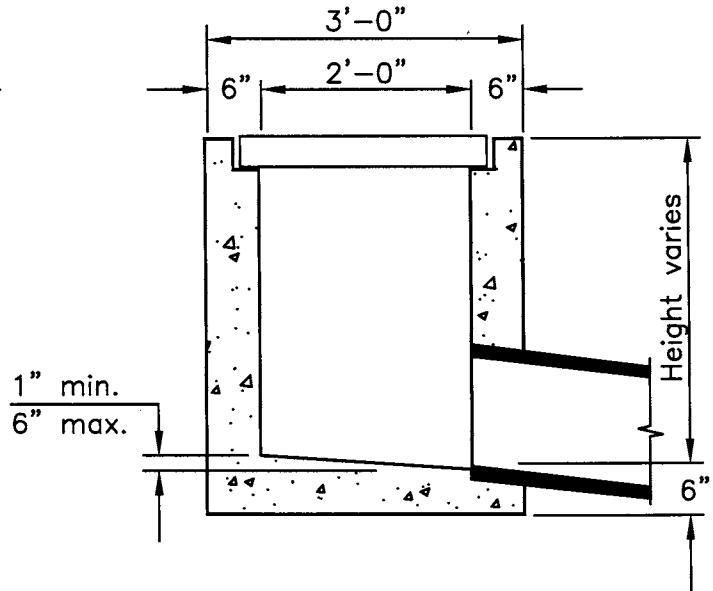


PLAN



CL. 'B' P.C.C.

SECTION A-A



SECTION B-B

STANDARD TYPE A2 INLET (BUBBLER)

DRAWN BY: LDL
 CHECKED BY:
 LAST REVISED: 10/04

SCALE:
N.T.S.

SECTION:
STORM DRAIN

DRAWING NO.: **STM-4**



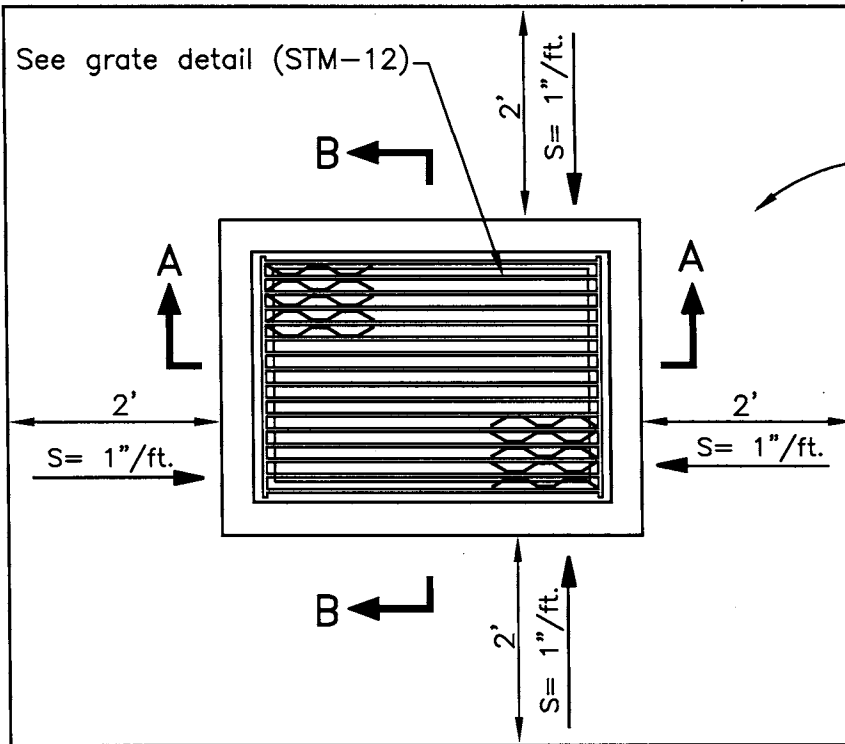
APPROVED BY:

[Signature]
 CITY ENGINEER

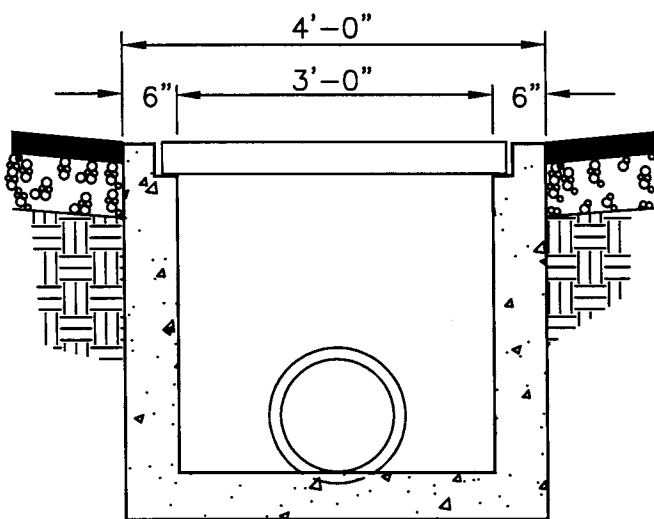
AUG 12 2005
 DATE

NOTE:

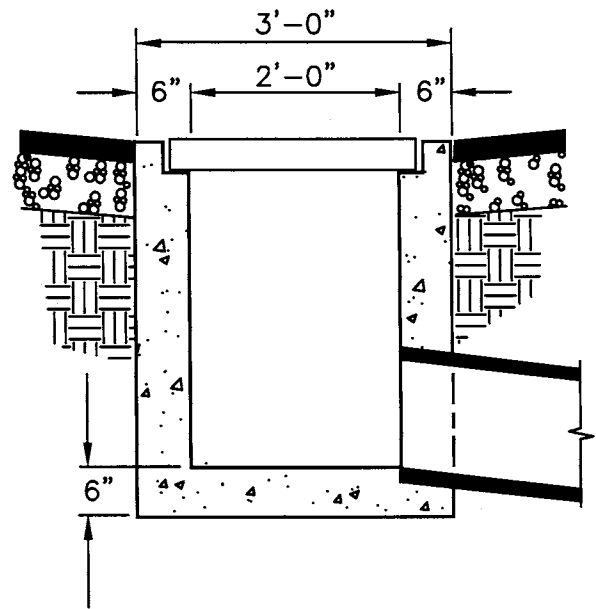
Reinforcing steel shall be required in walls of drop inlets which are greater than 6' in depth. Horizontal and vertical bars shall be #4, spaced 12" O.C. and placed between 1 1/2" and 2 1/2" from surface of inside wall.



PLAN



SECTION A-A



SECTION B-B

STANDARD FIELD INLET (24" X 36")

DRAWN BY: LDL
 CHECKED BY:
 LAST REVISED: 10/04

SCALE:
 N.T.S.

SECTION:
STORM DRAIN

DRAWING NO.: **STM-5**



APPROVED BY:

[Signature]

CITY ENGINEER

AUG 12 2005

DATE

NOT IN USE

DETAIL TITLE



APPROVED BY:

Paul S. ...

CITY ENGINEER

AUG 12 2005

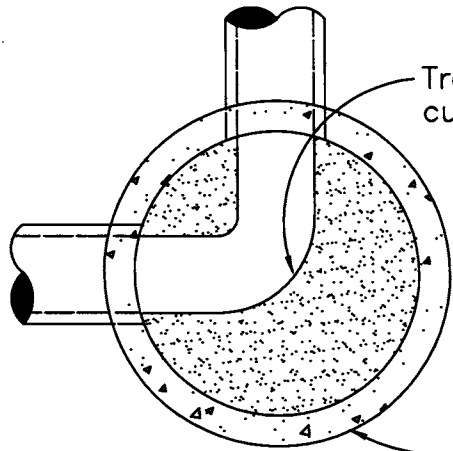
DATE

DRAWN BY: LDL
CHECKED BY:
LAST REVISED: 10/04

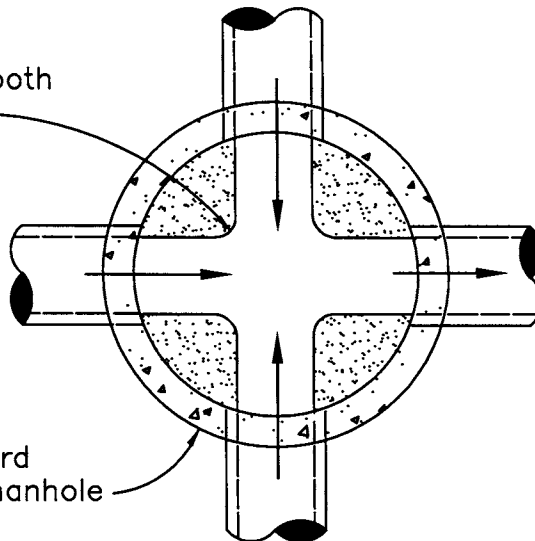
SCALE:
N.T.S.

SECTION:
STORM DRAIN

DRAWING NO.: STM-6



TYPICAL M.H. AT PIPELINE ANGLE



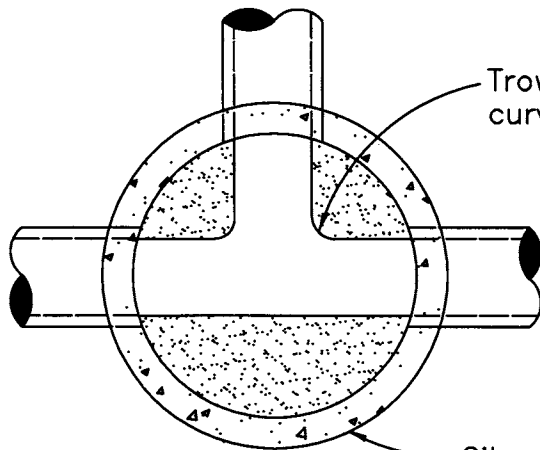
TYPICAL M.H. WITH 2 BRANCHES

NOTE:

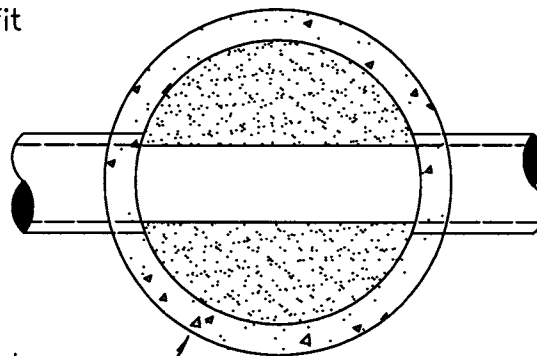
Precast bases are acceptable.

LEGEND

 Indicates shelf



TYPICAL M.H. 1 BRANCH




TYPICAL STRAIGHT THROUGH M.H.

STANDARD MANHOLE CHANNELIZATIONS

DRAWN BY: LDL
 CHECKED BY:
 LAST REVISED: 10/04

SCALE:
N.T.S.

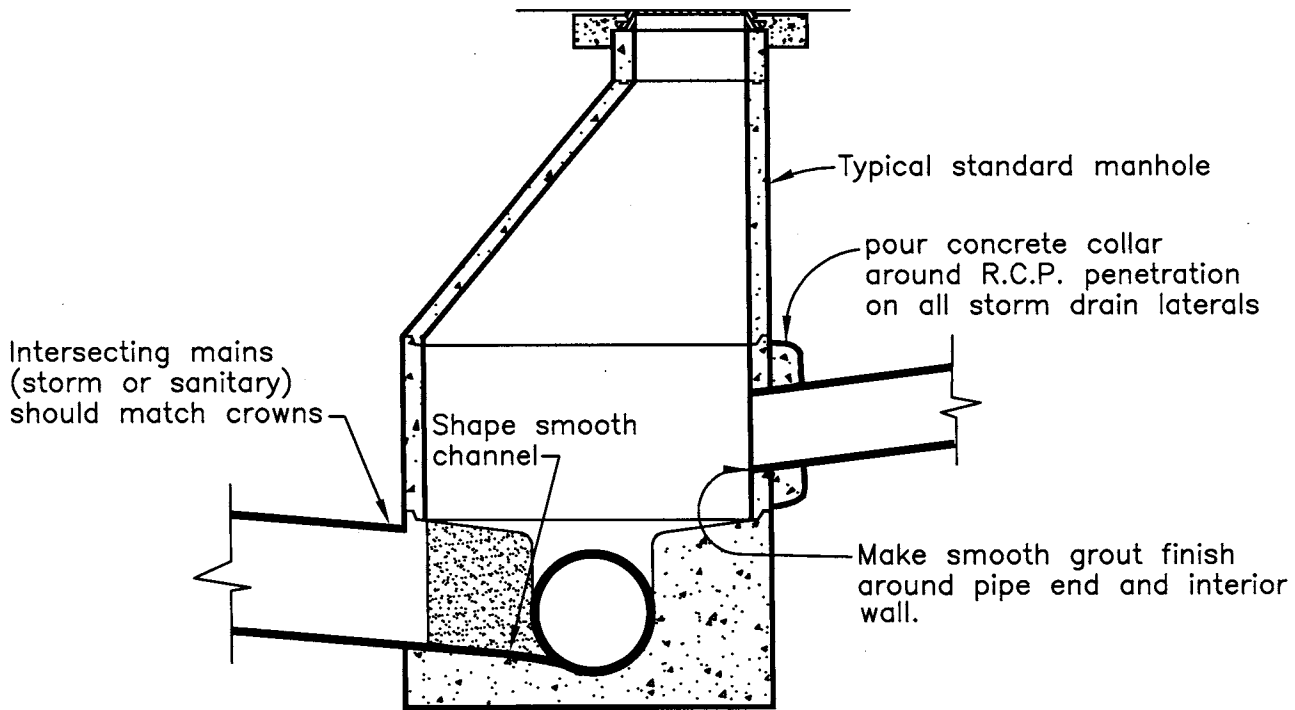


APPROVED BY:

 CITY ENGINEER

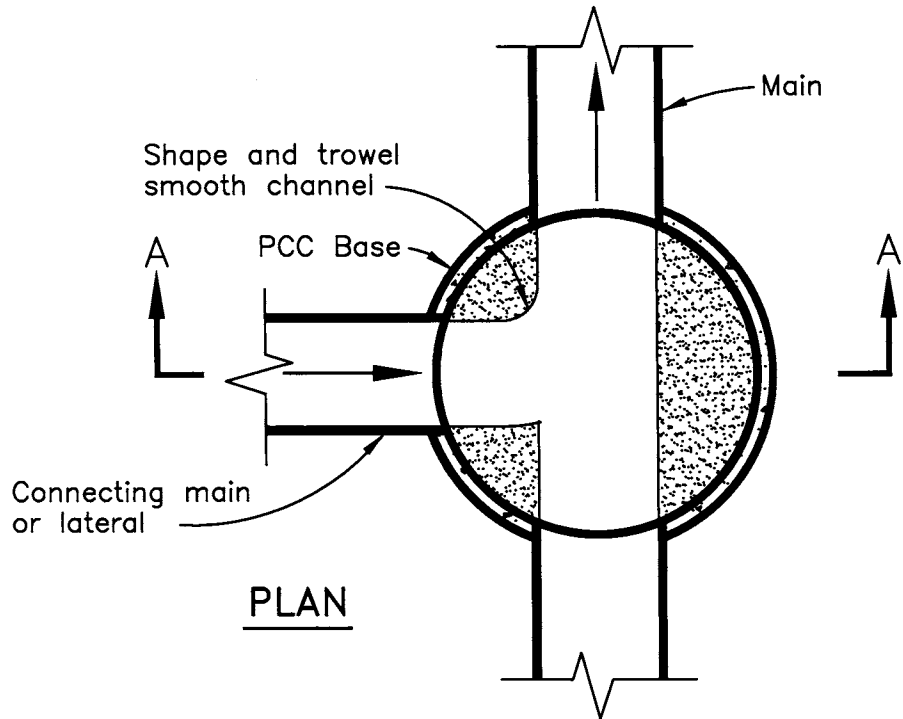
AUG 12 2005
 DATE

SECTION:
STORM DRAIN

DRAWING NO.: **STM-8**



SECTION A-A



PLAN

MANHOLE CONNECTION DETAIL

DRAWN BY: LDL	SCALE:
CHECKED BY:	N.T.S.
LAST REVISED: 10/04	

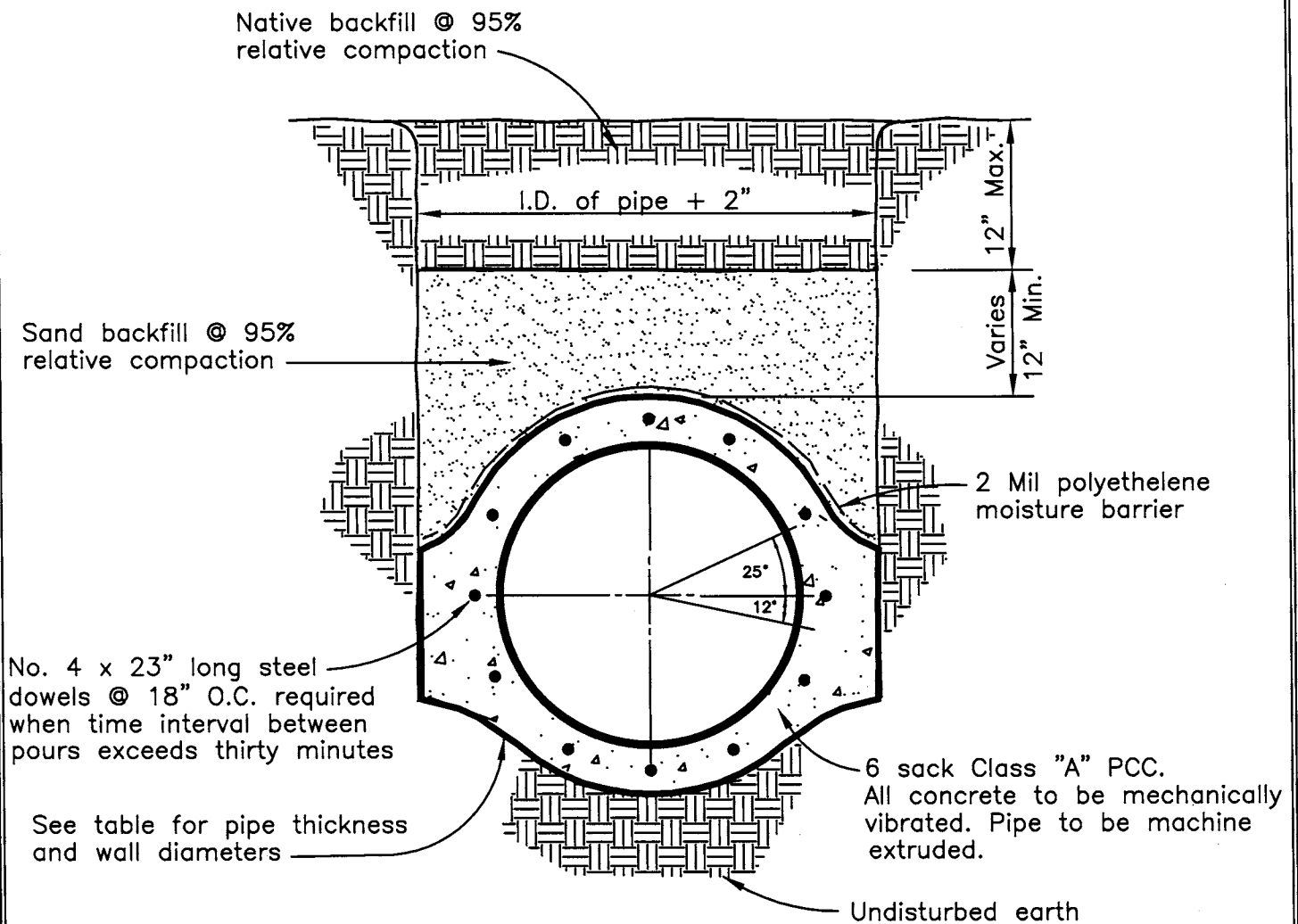


APPROVED BY: *Paul Sorensen*
 CITY ENGINEER
 AUG 12 2005
 DATE

SECTION:
STORM DRAIN
 DRAWING NO.: **STM-9**

TABLE OF INTERNAL DIAMETERS AND WALL THICKNESS

Nominal internal diameter in inches	Minimum wall thickness in inches	"T" in inches
24 to 30	3	3 3/4
33 or 36	3 1/2	4 1/4
42	4	4 3/4
48	5	6 1/2
54	5 1/2	7 1/2
60	6	9
66	6 1/2	9
72	7	9
84	8	9
96	9	10 1/2



CAST IN PLACE CONCRETE PIPE

DRAWN BY: LDL
 CHECKED BY:
 LAST REVISED: 10/04

SCALE:
N.T.S.

APPROVED BY:

Paul S. ...

AUG 12 2005

CITY ENGINEER

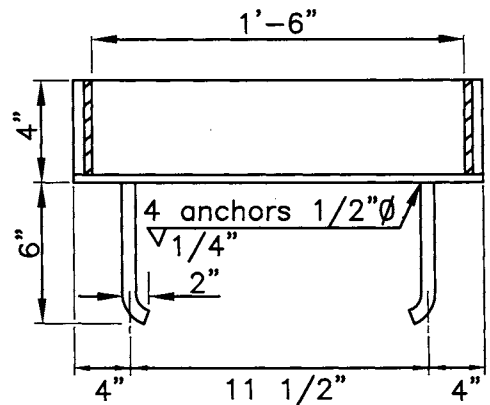
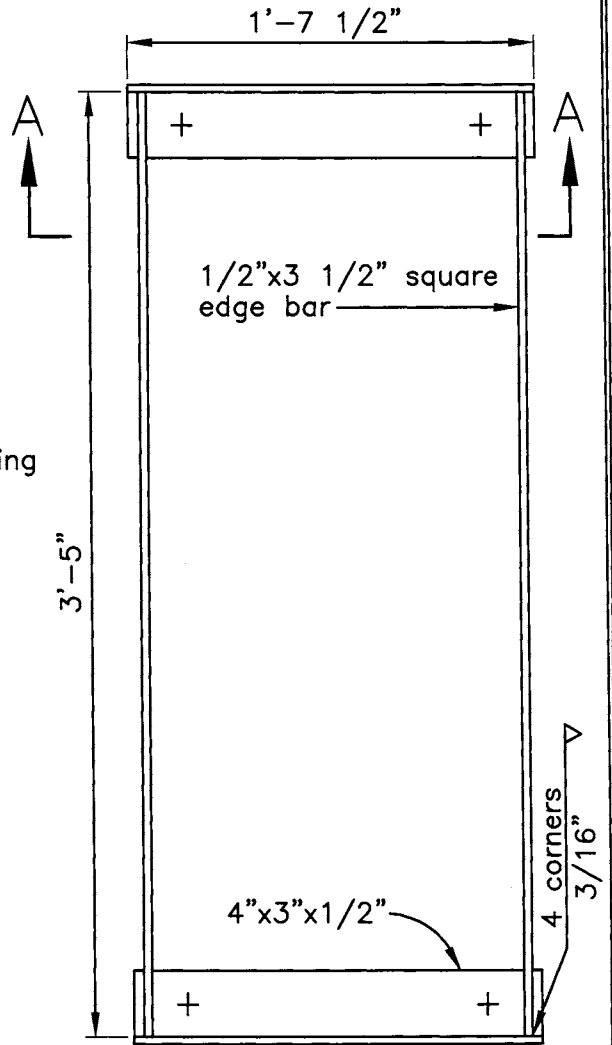
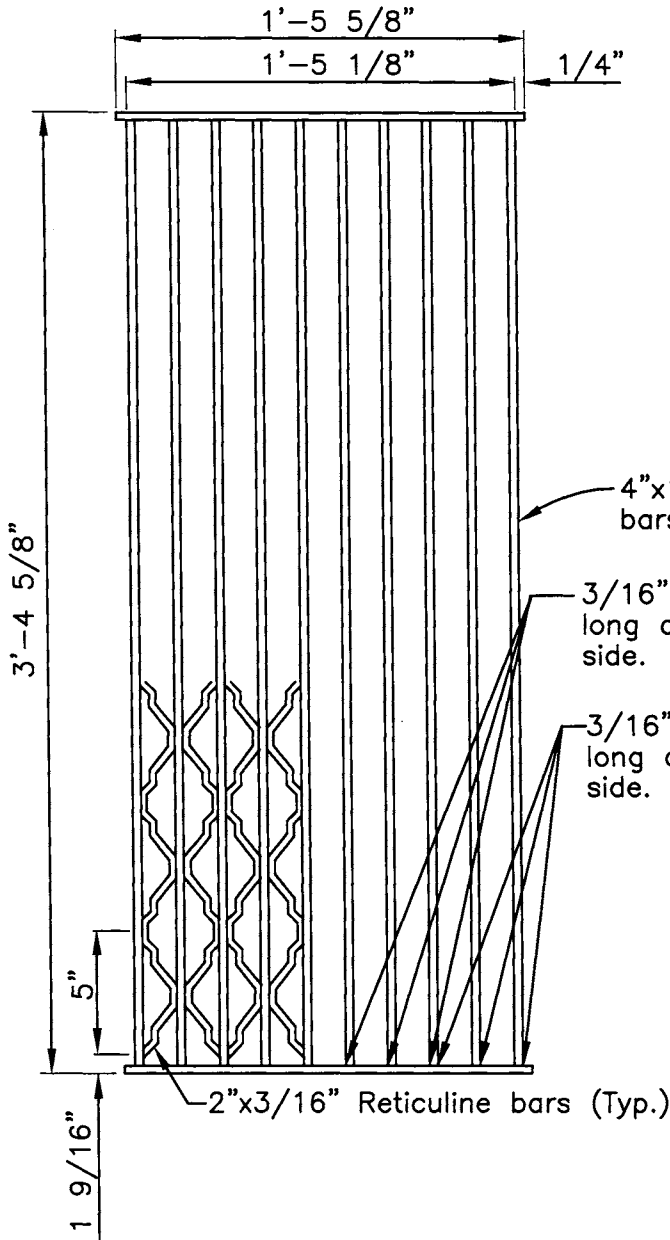
DATE

SECTION:

STORM DRAIN

DRAWING NO.: **STM-10**





NOTES:

1. Place grate bars parallel to flow.
2. All miscellaneous iron and steel to be galvanized after fabrication.
3. 3/8" O Rivets to be placed @ 5" O.C.
4. Open area to equal 79.8% min.
5. Frame and grate to be Pheonix Iron Works model #P-6301.

STANDARD 18" X 36" CURB INLET FRAME & GRATE



APPROVED BY:

Robert L. Jordan

AUG 12 2005

CITY ENGINEER

DATE

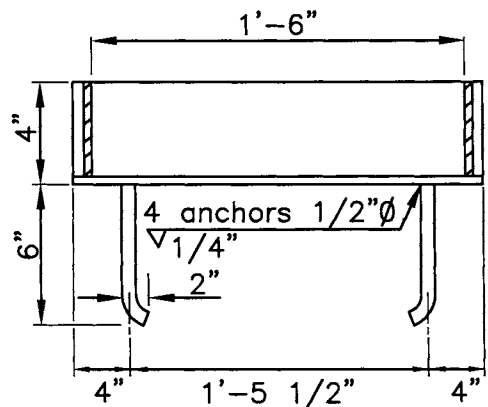
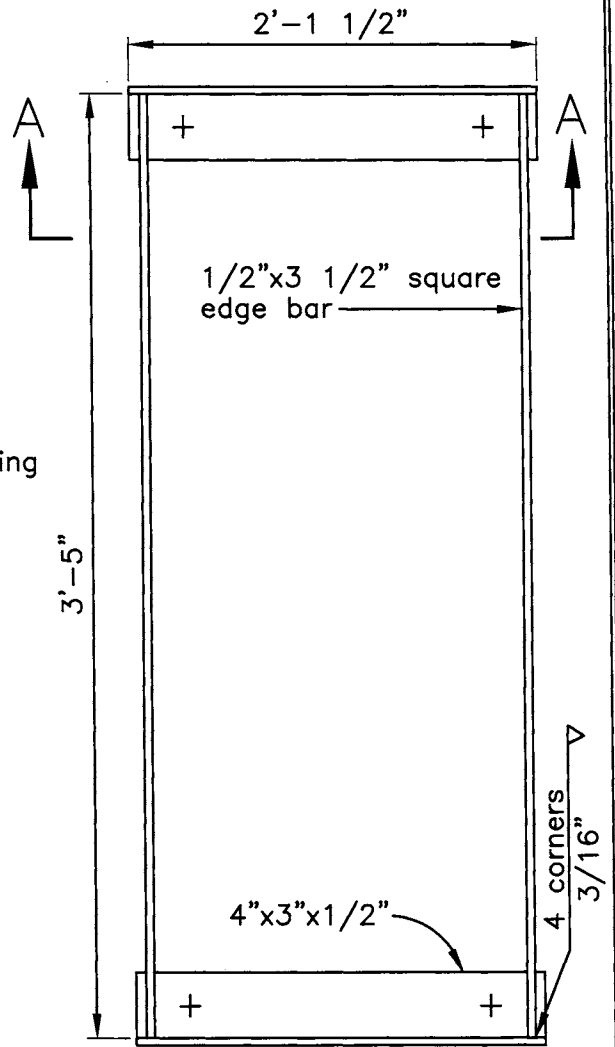
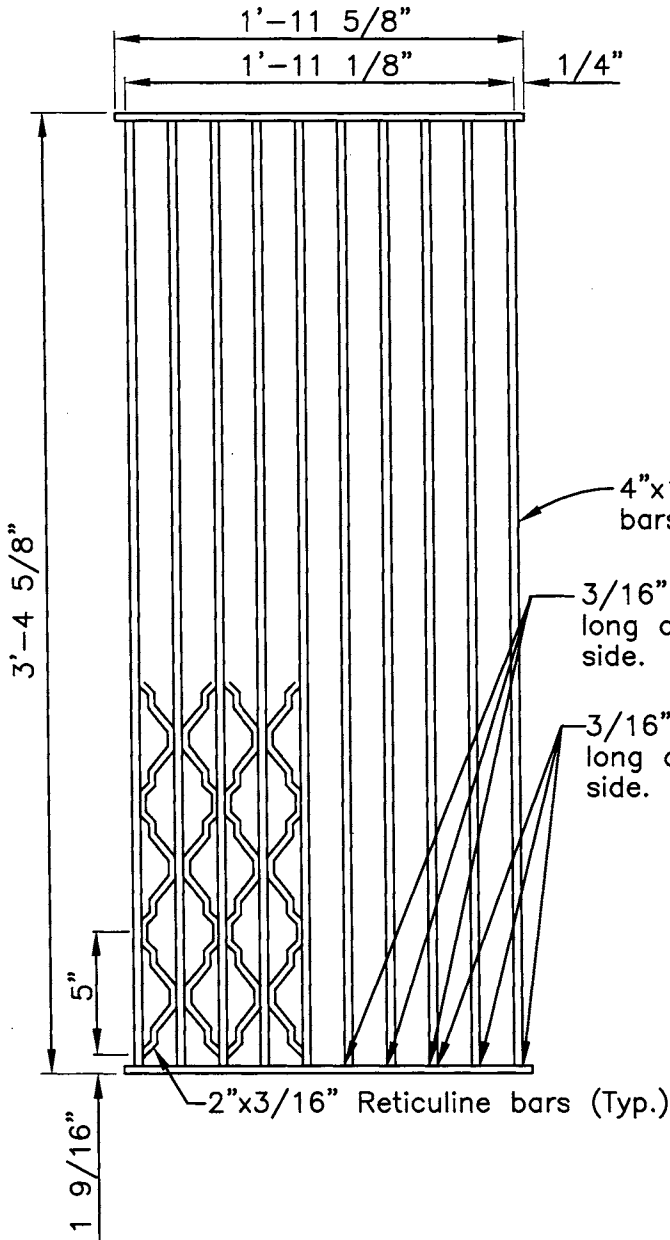
DRAWN BY: LDL
 CHECKED BY:
 LAST REVISED: 10/04

SCALE:
 N.T.S.

SECTION:

STORM DRAIN

DRAWING NO.: **STM-11**



NOTES:

1. Place grate bars parallel to flow.
2. All miscellaneous iron and steel to be galvanized after fabrication.
3. 3/8" O Rivets to be placed @ 5" O.C.
4. Open area to equal 79.8% min.
5. Frame and grate to be Pheonix Iron Works model #P-6302 or approved equal.

STANDARD 24" X 36" CURB INLET FRAME & GRATE



APPROVED BY:

Paul Sorenson

CITY ENGINEER

AUG 12 2005

DATE

DRAWN BY: LDL
 CHECKED BY:
 LAST REVISED: 10/04

SCALE:
 N.T.S.

SECTION:
STORM DRAIN

DRAWING NO.: **STM-12**