

# California High Speed Rail Certifies Route through Gilroy

**CALIFORNIA HIGH-SPEED RAIL AUTHORITY  
CERTIFIES REVISED FINAL PROGRAM EIR  
FOR BAY AREA TO CENTRAL VALLEY –  
PROMISES GILROY AREA COMMUNITY  
ENGAGEMENT MEETINGS –**



## ***City Council Considers No Confidence Vote in HSR Authority and Project***

The California High-Speed Rail Authority has certified its Revised Final Program Environmental Impact Report (EIR) for the Bay Area to Central Valley portion of the state's high-speed train system. The Revised Final Program EIR includes responses to more than 3,700 comments from more than 500 agencies, local governments and members of the public received in the 45-day comment period in March and April, when the Authority circulated the draft revised document to comply with a court judgment. The ruling did not affect the Authority's continuing project-level work to evaluate the environmental impacts of the San Francisco to San Jose or San Jose to Merced sections of the system. The City of Gilroy provided timely comments on the Draft EIR as well highlighting additional areas of study that the city believes the Authority must undertake in evaluating train station and track alignments through Gilroy. The City maintains information about High Speed Rail in Gilroy at [www.cityofgilroy.org](http://www.cityofgilroy.org).

While the revised report includes a number of revisions, public comments and new responses to those comments, like the 2008 report that preceded it, the newly certified report identified the Pacheco Pass Network Alternative serving San Francisco via San Jose as the preferred option to connect the Bay Area to the Central Valley. The Authority asserts that the Pacheco Pass alternative minimizes the impacts on wetlands, bodies of water and the environment.

As required by the court, the revised report includes a revised description of the project between San Jose and Gilroy that incorporates impacts on surrounding homes and businesses, impacts on the Monterey Highway and impacts on Union Pacific's use of its right-of way.

The revised report also addresses statements made by Union Pacific regarding the use of its right-of-way for the project and the implications for land use and property impacts in the region, finding that the railroad's position would not render any of the alternative alignments analyzed in the EIR infeasible.

In March, the Authority circulated a Revised Draft Program EIR to comply with a court judgment challenging the 2008 report. The Authority held two public hearings in the region earlier this year, and also accepted public comment on the revised report at two meetings prior to taking a final vote to certify the report and selecting the Pacheco Pass as the preferred network alternative to connect the Bay Area to the Central Valley.

***continued***



# California High Speed Rail Certifies Route through Gilroy (continued)



## Stakeholder Outreach

The Authority has promised the City that it will undertake a stakeholder engagement process regarding its design alternative through the Gilroy area. The Authority has indicated that the effort, called Gilroy Area Community Engagement, will get underway as soon as a state budget it adopted and monies approved. The Authority indicates that all the pertinent issues (noise, circulation, parking, vibration, etc.) will be discussed and documented during the workshops and that the alignment/station option(s) selected will be based on both system needs and input from the community.

## Preliminary Alternatives Analysis

On June 3, 2010, the Authority released its Preliminary Alternatives Analysis (PAA) which identifies the various route alternative through Gilroy that will be the subject of further study and environmental review. The City provided the Authority substantive comment regarding the PAA, and program level EIR, and has requested that the Authority incorporate all the City recommended areas of study and review into the project level EIR, currently underway, prior to the Authority's selection of a final route and station location. The Authority will be considering public input and feedback on the PAA at its November 4, 2010 meeting and the City strongly suggests that residents, businesses and other stakeholders provide comment to the Authority on the PAA. The project level environmental review is expected to take approximately one year to complete.

## Council Considers No Confidence Vote in High Speed Rail Authority and Project

At the October 4, 2010, City Council study session the council held a wide ranging discussion of the high speed rail project with some members expressing frustration with a lack of information coming from the Authority regarding its plans for the Gilroy area section of the project. The council will consider a whether to approve a resolution of "no confidence" in the high speed rail project at its meeting on October 19, 2010.

For More Information related to the project in the Gilroy area::






Following is a link to the Morgan Hill-Gilroy subsection:

<http://www.cahighspeedrail.ca.gov/library.asp?p=9489>

The public will be notified of any new information and developments on the City of Gilroy website at [www.cityofgilroy.org](http://www.cityofgilroy.org) click on the High Speed Rail garlic tab on the right side of the home page.

A High Speed Rail Information Center which includes a large alignment map is located at the south end of the main hallway at Gilroy City Hall, 7351 Rosanna Street, Gilroy.

## PROPOSED HIGH SPEED RAIL ALIGNMENT THROUGH GILROY

- LEGEND**
-  AT GRADE ALIGNMENT
  -  ELEVATED/AERIAL ALIGNMENT
  -  UNDERGROUND/TRENCH ALIGNMENT
  -  EXISTING ROAD TO BE GRADE SEPARATED
  -  EXISTING ROAD TO BE CLOSED



# Meet Your Police Department



The City of Gilroy Police Department has 84 staff which consists of 60 sworn officers and 24 professional staff. Staff are deployed in the following areas of the department: Administration, Anti-Crime Team, Communications 911, Crime Analysis, Detectives, Neighborhood Resource Unit, and the Records Unit.

## **Department Specialties:**

Our department prides itself in meeting the needs in Gilroy by providing a Crime Scene Investigation Team, Major Accident Investigation Team, Mounted Unit, Traffic Officer, Bike Patrol Unit, Special Operations Team, and a Hostage Negotiations Team, and a School Resource Officer Program.

## **Community Partnerships**

We invite the community to participate in the following programs:

- Volunteers in Policing Program (VIPS)
- Citizen Police Academy
- Neighborhood Academy
- Police Explorer Program
- Reserve Police Officer Program
- Graffiti Abatement Committee (Wipe-Out-Watch volunteers)
- Police Chief's Advisory Committee

We also encourage the community to get involved in crime prevention by organizing a Neighborhood Watch program. This program serves as the "Eyes & Ears" for the police. Residents are provided training on how to prevent crimes at home and learn how to call in suspicious activity that is occurring with the goal of working together to prevent crime.

Public safety is a top priority in Gilroy. We endeavor to foster community partnerships with residents, schools, community based organizations, and businesses. Together we can work to reduce crime and make Gilroy a great place to live, work, and play.

<b>Some Statistics for FY 09/10</b>	
Dispatch Ctr. In/Outbound Phone Calls	– 142,830
911 calls received	– 15,854
Calls Dispatched	– 40,885
Adult Arrests	– 2,332
Traffic Citations	– 3,316
Case reports Processed	– 11,132
Property Items Processed	– 6,567

# New Gilroy Library Update



## The New Gilroy Library Begins to Take Shape



View captured by the Library Construction Cam, accessible to the public via the City website.



Forms for poured in place concrete walls are erected



Concrete being pumped into the foundation

Land Acquisition	2,075,000
Management	1,904,785
Permits, Fees & Utilities	669,765
Architect & Engineer	3,347,367
Testing & Inspection	<u>287,700</u>
Subtotal Land and Soft Costs	8,284,617
Soft Cost Contingency	<u>173,525</u>
Total Land and Soft Costs	8,458,142
<b>Demolition</b>	<b>151,787</b>
<b>Construction</b>	<b>20,902,226</b>
<b>Construction Contingency</b>	<b><u>2,931,341</u></b>
<b>Construction Hard Costs Total</b>	<b>23,985,354</b>
<b>Furniture and Fixtures</b>	<b>690,000</b>
<b>Temporary Library</b>	<b><u>866,504</u></b>
<b>Subtotal</b>	<b>25,541,858</b>
<b>TOTAL EXPENSES</b>	<b>34,000,000</b>

### Construction Activity – Fast Facts

- The footings are 100% placed which used 1,080 yards of concrete from Star Concretes Gilroy batch plant. 30% of the aggregate for this mix was reclaimed, meaning unused concrete was washed and the aggregate was reused for the foundation. This will contribute to a material reuse LEED credit.
- There has been 102 tons of reinforcing steel delivered to the job site for the footings, column and vertical wall reinforcing. The steel contains between 75% and 80% post consumer scrap metal and 18% to 20% post industrial scrap metal. This will contribute to a material reuse LEED credit.

During the 2 year construction period, the Gilroy Library is operating out of a temporary facility at 7652 Monterey Street (between Third and Fourth Streets).

More info at:

[http://www.cityofgilroy.org/cityofgilroy/city\\_hall/community\\_development/engineering/projects/default.aspx](http://www.cityofgilroy.org/cityofgilroy/city_hall/community_development/engineering/projects/default.aspx)

Visit the Gilroy Library at the temporary location – 7652 Monterey Street, between 3<sup>rd</sup> and 4<sup>th</sup> Streets



# City of Gilroy Q1 Sales Tax Update 2010

## Reconciliation of FIRST Quarter 2010 Sales

### GENERAL OVERVIEW

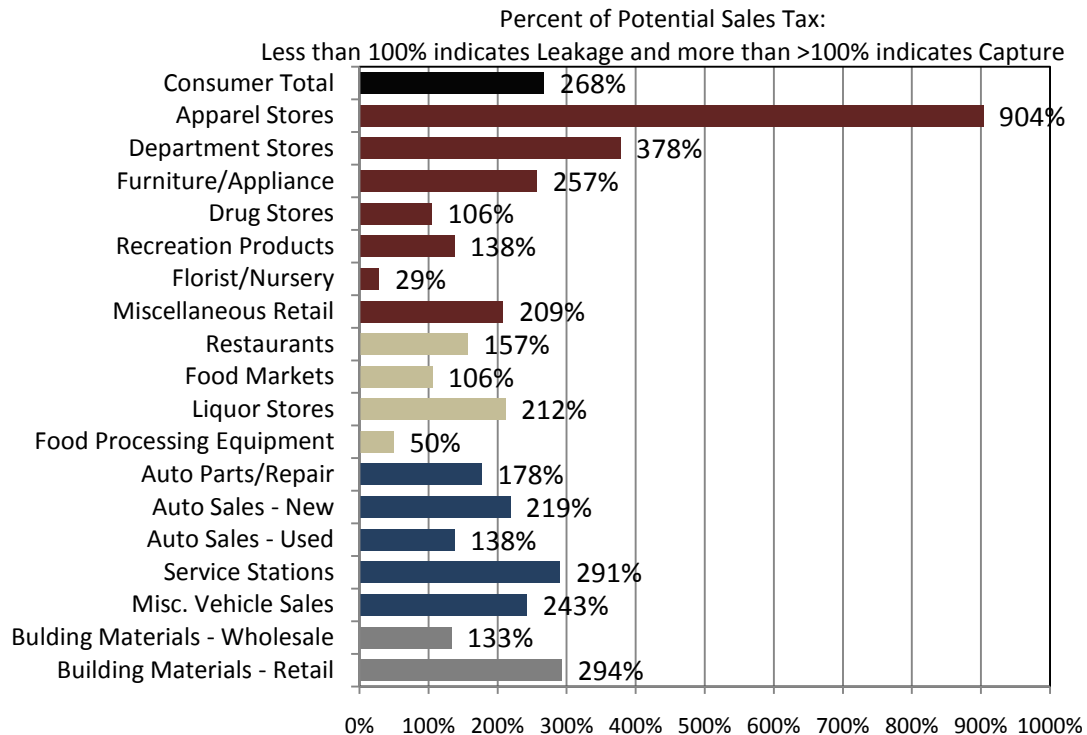
For the first time since 2007, the State's current quarter to prior year quarter sales tax increased by 0.5%. While the news is the first positive sign in several years, the State's economy does not show immediate signs of impending growth as much as the 0.5% growth came from increased gasoline prices over the prior year. Eventual growth is expected to come slowly after the job market and housing markets stabilize.

Western California sales (including the North Coast, San Francisco Bay Area, Central Coast and South Coast regions) grew 1.2% in the 1<sup>st</sup> Quarter 2010 compared to 1<sup>st</sup> Quarter 2009. As for the City of Gilroy, sales cash receipts changed by 6.8%, while business activity increased 4%. These results were slightly better than anticipated.

The largest gains for the City of Gilroy included service stations and apparel stores. The largest decline was in construction.

### Gilroy: 1st Quarter 2010 Sales Tax Capture & Gap Analysis Report

Percent of Potential Sales Tax: Less than 100% indicates leakage and more than 100% indicates capture (based on disposable income in Santa Clara County). This chart shows Gilroy as a sales tax "capture" community and that even with the recession Gilroy is a regional destination capturing sales tax in excess of what residents alone typically spend.



### TOP 25 SALES/USE TAX CONTRIBUTORS

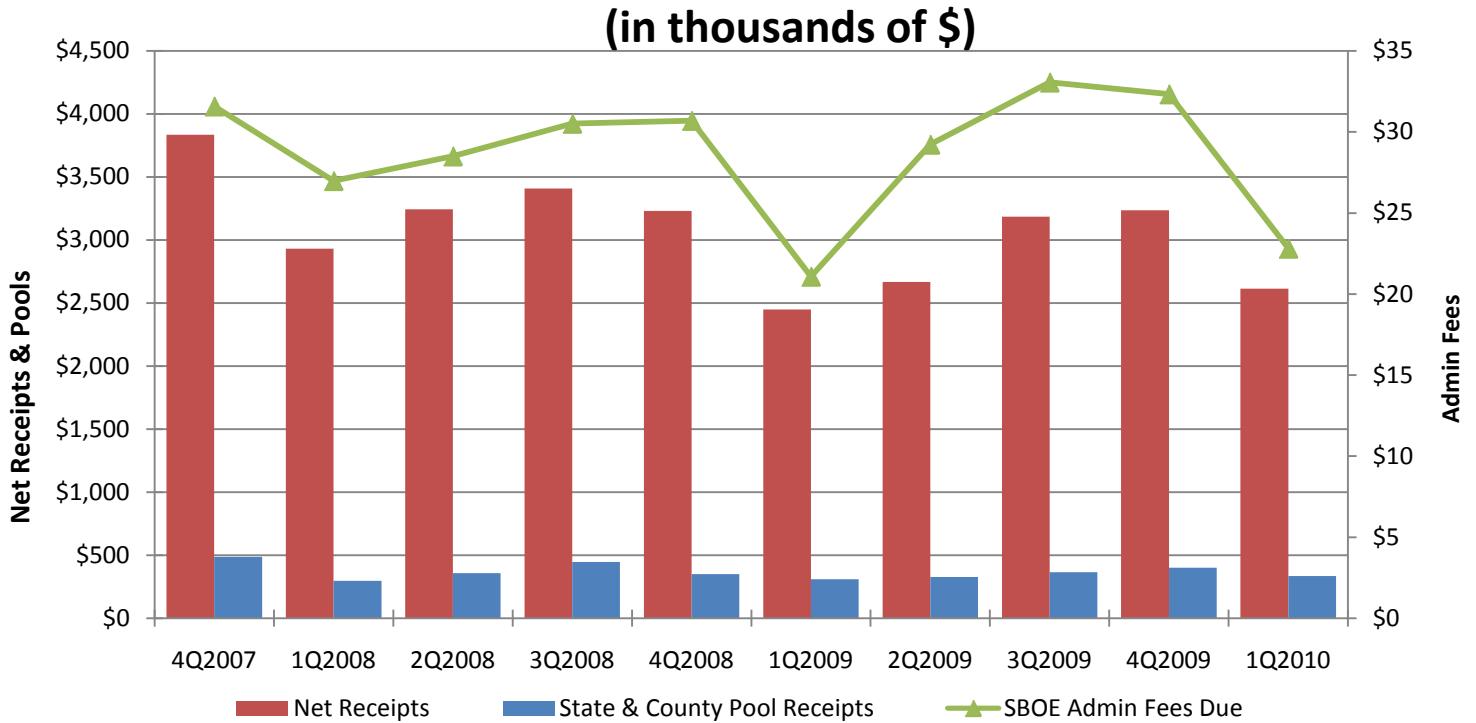
The following list identifies Gilroy's Top 25 Sales/Use Tax contributors. The list is in alphabetical order and represents the year ended 1st Quarter 2010. The Top 25 Sales/Use Tax contributors generate 43.2% of Gilroy's total sales and use tax revenue.

BANANA REPUBLIC	GILROY TOYOTA	SOUTH COUNTY NISSAN
BEST BUY STORES	HOME DEPOT	TARGET STORES
CALVIN KLEIN	KOHL'S DEPT. STORES	THE GAP
CHEVRON SERVICE STATIONS	LOWE'S HOME IMPROVEMENT	THE GARLIC FARM TRAVEL CENTER
COACH STORES	MCDONALD'S	TV'S GAS & FOODMART
COSTCO WHOLESALE	NIKE FACTORY STORE	UNION 76 SERVICE STATIONS
GILROY CHEVROLET/CADILLAC	POLO RALPH LAUREN	WAL MART STORES
GILROY GAS & MINI-MART	ROTTEN ROBBIE SERVICE	
GILROY HONDA	SOUTH COUNTY CHRYSLER PLYMOUTH	

### Business Activity Performance Analysis

Projected 1Q 2010 Final Results	\$2,263,468
Actual 1Q 2009 Results	\$2,176,909
Projected Percentage Change	4.00%

## HISTORICAL CASH COLLECTIONS ANALYSIS BY QUARTER



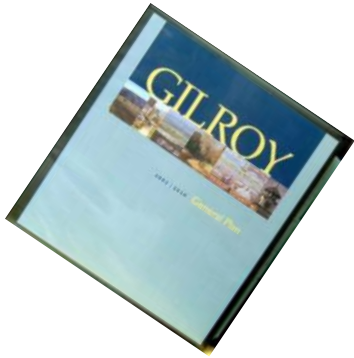
## SALES TAX REVENUES

Group	QTR ending 3/31/10	QTR ending 3/31/09	Change
Outlet Center	\$467,645	\$452,827	3.3%
Auto Dealers:			
Eastside Auto Mall	164,953	174,189	
Other Auto Dealers	18,853	13,114	
Total Auto Dealers	183,806	187,303	-1.9%
Services Stations	240,773	170,686	41.1%
Downtown Economic Incentive Area (Excluding Auto Dealers and Service Stations)	39,541	46,831	-15.8%
Newman Development (Exc. Serv. Stations)	461,679	425,306	8.6%
Regency Center	199,017	181,586	9.6%
<b>Major Groups Total</b>	<b>1,592,371</b>	<b>1,464,539</b>	<b>8.7%</b>
<b>Other Groups</b>	<b>710,444</b>	<b>696,806</b>	<b>2.0%</b>
<b>Total Groups</b>	<b>\$2,302,815</b>	<b>\$2,161,345</b>	<b>6.5%</b>
<b>State and County Pools Less Adm. Fees</b>	<b>312,162</b>	<b>287,374</b>	<b>8.6%</b>
<b>Timing Differences:</b>			
Triple Flip, SBOE late payments and adj.	-351,509	-271,810	29.3%
<b>Total Sales Tax</b>	<b>\$2,263,468</b>	<b>\$2,176,909</b>	<b>4.0%</b>

### SALES TAX PERFORMANCE Q1 10 Compared to Q1 09 Santa Clara County

Campbell	-4.4%
Cupertino	9.3%
<b>Gilroy</b>	<b>4.0%</b>
Los Altos	2.3%
Los Gatos	7.5%
Milpitas	11.1%
Monte Sereno	44.3%
Morgan Hill	6.1%
Mountain View	8.1%
Palo Alto	0.8%
San Jose	6.7%
Santa Clara	1.2%
Santa Clara County	-2.8%
Saratoga	5.8%
Sunnyvale	9.4%

# The Gilroy General Plan – How it is Structured



This article is the second in a series describing the need, purpose and importance of the Gilroy General Plan.

## Structure of the Plan

The Gilroy General Plan is written and designed for use by all members of the Gilroy community: residents, businesses, property owners, developers, City staff, and elected and appointed officials. Following is a brief overview of the General Plan's key structural components to help you understand how it is organized.

### Community Setting (Chapter 2)

This chapter summarizes existing conditions and key issues for the General Plan, based on the detailed information presented in the *General Plan Background Report* (bound under separate cover). It also provides a brief overview of the City's planning history, and a summary of the key assumptions and projections on which the General Plan is based.

### Vision for Gilroy (Chapter 3)

The vision describes the type of community we want Gilroy to be in the future. It is a reflection of our community's values, defining the outcomes we are trying to achieve through the planning process. It is the foundation for the General Plan's guiding principles, and for its issue-specific goals, policies and implementing actions.

### Guiding Principles (Chapter 3)

These are the key strategies that guide the General Plan towards achieving the community's vision. They represent the major themes—the "big ideas" on which the rest of the plan is based.

### Areas of Special Concern (Chapter 3)

The General Plan identifies four areas of special concern that have received focused attention in the update process: Neighborhood Districts; Campus Industrial Areas; Downtown; and Hecker Pass.

### Introduction

Adopted June 2002 Gilroy General Plan 1-5

These areas are critical to achieving the General Plan's vision and goals. The focused discussions in Chapter 3 help clarify the Plan's intent for these areas, providing a more detailed level of policy direction. These directives are further supported by the policies and implementing actions in subsequent chapters.

# The Gilroy General Plan – How it is Structured (continued)



## Goals, Policies, and Implementing Actions (Chapters 4 to 8)

The General Plan contains five issue chapters: Community Design and Development; Housing; Transportation and Circulation; Public Facilities and Services; and Community Resources and Potential Hazards. The specific issues addressed in each chapter are listed in the Table of Contents. Each issue chapter presents goals, policies, and implementing actions:

A **Goal** is a general statement of values or aspirations held by the community in relation to each issue area. It is the end towards which the City will direct its efforts.

A **Policy** is a more precise expression regarding the community's position on a particular issue, or how a particular goal will be interpreted or implemented. Policies may include guidelines, standards, objectives, maps, diagrams, or a combination of these components:

A **Guideline** is a policy statement that provides a set of detailed instructions regarding how some aspect of land use regulation will be conducted.

A **Standard** is a policy statement with a specific, quantified measure of performance.

An **Objective** is a policy statement where very specific results, dates or products are included.

A **Map or Diagram** is a graphic expression of policy. Maps illustrate the geographic application of policies.

An **Implementing Action** puts the goals and policies into practice. These might include ongoing programs sponsored by the City (e.g., general road maintenance); discrete, time-specific actions (e.g., widen the sidewalks in a particular area); or further planning actions (e.g., develop a specific plan or enact an issue-specific ordinance).

## Plan Management and Coordination (Chapter 9)

The General Plan includes goals, policies and implementing actions regarding its ongoing management, including procedures for making amendments to the General Plan. It also encourages ongoing community participation in the City's planning and development processes, and addresses coordination issues between the City and other planning and regulatory agencies, including coordination between the Gilroy General Plan and the *South County Joint Area Plan*.

## Implementation Priorities (Chapter 10)

To provide direction for the General Plan's implementation, the final chapter establishes implementation priorities, identifying implementing actions from previous chapters that should be prioritized for implementation in the next one to five years.

The General Plan can be accessed via this link on the City of Gilroy website:

[http://www.cityofgilroy.org/cityofgilroy/city\\_hall/community\\_development/planning/general\\_plan/default.aspx](http://www.cityofgilroy.org/cityofgilroy/city_hall/community_development/planning/general_plan/default.aspx)



Santa Clara County is encouraging residents to sign up for AlertSCC, the County's emergency notification system, to receive free emergency messages during a disaster. This is a county-wide effort aimed at protecting county residents during and after a disaster such as an earthquake, flood or fire.

Signing up at [www.AlertSCC.com](http://www.AlertSCC.com) is one of the easiest steps people can take to help prepare themselves and their loved ones for a disaster. AlertSCC is a free, easy, and confidential way for anyone who lives or works in Santa Clara County to get emergency warnings sent directly to their cell phone, mobile device, email, or landline. AlertSCC can reach you wherever you are to provide information and instructions in a variety of emergency situations, which may include:

- Flooding, wildfires, earthquakes, and subsequent evacuations
- Public safety incidents, including crimes, that immediately affect your neighborhood
- Post-disaster information about shelters, transportation, or supplies

It only takes a minute. Sign up today and tell someone you care about! [www.AlertSCC.com](http://www.AlertSCC.com)



## The Gilroy Climate Action Plan

Come share your ideas for how to improve Gilroy's environmental, energy, and economic health at the Climate Action Plan Community Workshop Saturday, October 9, 9:00 am – 12:30 pm at the Gilroy Senior Center, 7371 Rosanna Street. For more information go to [www.greengilroy.org](http://www.greengilroy.org) or call 846-0566.

### What is the Gilroy Climate Action Plan?

Gilroy's CAP will provide a roadmap for achieving targeted reductions in greenhouse gas (GHG) emissions, for conserving renewable resources, and for decreasing fossil fuel dependency throughout the community and within City government operations. The CAP will identify and verify emission sources and quantities, establish GHG reduction targets and other environmental goals consistent with regional and State regulations. The final plan will consist of a collection of implementable actions and supporting information that will help Gilroy become more sustainable and adaptive to an uncertain future. We welcome your help in creating this plan!

## Coffee with the Mayor 2010

There are currently many ways in which citizens can engage the Mayor in discussion, but Coffee with the Mayor venues provide an additional, informal setting in which the Mayor can answer questions and otherwise engage in specific or broad discussions on city issues with Gilroy residents.

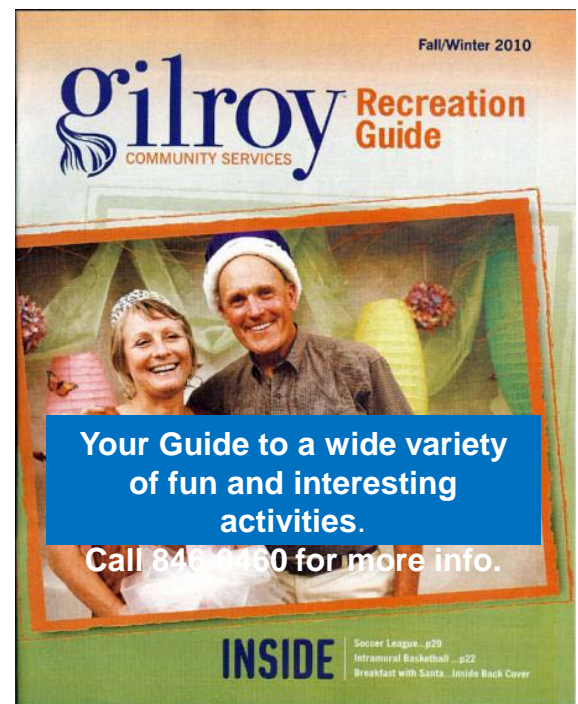
For more information call 408-846-0491.

All coffees are scheduled for Saturdays and will begin at 9:30 a.m. in the City Council Chambers , 7351 Rosanna Street .

**October 23**

**November 13**

**December 11**



# Semi-Annual Creek Clean-Up a Huge Success!



A Special **THANK YOU** to the many volunteers that participated in the annual Uvas Creek clean-up on Saturday, September 25<sup>th</sup>. Creek clean-ups are held every year in May and September.

154 Volunteers- a new Volunteer record for creek cleanups!

2.1 miles of the Uvas Creek cleaned from West Luchessa to Santa Teresa

An Estimated 1,880 pounds of trash was picked up



Stop by the Senior Center Gift Shop for a grand selection of unique items

## Gifts for all Occasions

**Senior Center**  
Gift Shop  
7371 Hanna St.

## DO YOU WANT TO CREATE YOUR OWN TV SHOW???

For more information about membership in CMAP, its mission and workshops, call or visit the website.

**Community Media Access Partnership**  
5055 Santa Teresa Blvd Gilroy, CA 95020  
voice 408.846.4983  
[www.cmap.tv](http://www.cmap.tv)

# October is Earthquake Preparedness Month



## Before an Earthquake

Striking with no notice, an earthquake can suddenly disable a community and leave individuals struggling for their lives. Prepare now to survive in earthquake country. Establish a family emergency plan and become familiar with the plans of where your family spends time - in schools, at work, and in your community.

### EMERGENCY PLAN

Establish a family emergency plan and become familiar with the plans of where your family spends time - - in schools, at work, and in our community.

### SAFE / DANGEROUS SPOTS

Know where the safe spots and dangerous spots are within your home in the event of an earthquake.

Safe Spots – Under sturdy tables/desks or against inside walls.

Danger Spots – Near windows, mirrors, hanging objects, fireplaces, tall furniture, etc

### EMERGENCY SUPPLIES

Assemble an emergency supplies kit.

### HOME HAZARDS

Conduct a home hazard hunt.

### FIRST AID

Learn some basic first aid.

### COMMUNITY

Participate with volunteering and training opportunities to help your community become better prepared.

## During an Earthquake

When the ground shakes, every moment matters. What will you do?

### IF INDOORS

Stay indoors...as there may be falling debris outside.

Get under a desk/table or stand against an interior wall, preferably a corner - - duck, cover, and hold.

Stay away from heavy objects that may fall, Stay away from windows and glass.

Do not use candles, matches or other open flames during or after the earthquake...as there may be gas leaks.

### IF OUTDOORS

Get into an open area away from trees, buildings, walls, and power lines.

### IF DRIVING

Pull over to the side of the road and stop. Avoid overpasses and power lines.

Stay inside your car until the shaking is over.

Be wary of hazards such as fallen objects, downed power lines or damaged roadways.

## After an Earthquake

You may be sound asleep, stranded in rush hour traffic, on the job, or at play. When the ground shakes, you must know what to do next.

### STAY CALM, BE PATIENT AND PUT YOUR EMERGENCY PLAN INTO ACTION, CHECK FOR INJURIES

Give first aid within your capabilities.

Get help for seriously injured people.

### LISTEN TO RADIO FOR NEWS / INSTRUCTIONS ASSESS THE DAMAGE, in Gilroy tune to 1610 AM Radio or Cable Channel 17

If you suspect damage, use flashlights. Do not use matches or electrical switches as the air may contain gas.

Sniff for gas leaks, starting at the water heater. If you smell gas or suspect a leak, turn off the main gas valve, open windows, and get everyone outside as soon as possible.

Shut off any other damaged utilities. (You will need a professional to turn gas back on.)

Clean up spilled medicines, bleaches, gasoline, and other flammable liquids as quickly and safely as possible.

### CONFINE / SECURE PETS

CALL YOUR FAMILY CONTACT (Do not use telephone again unless it is a life-threatening emergency.)

### AVOID FALLEN POWER LINES

CHECK ON YOUR NEIGHBORS, ESPECIALLY THOSE WITH SPECIAL NEEDS (elderly, disabled, medically fragile, etc...).

### HELP YOUR COMMUNITY RECOVER

### DO NOT SPREAD RUMORS

### EXPECT AFTERSHOCKS

Attributions (American Red Cross)

<http://pubs.usgs.gov/gip/2005/15/gip-15.pdf> Follow this link to a very helpful USGS Earthquake Information Guide

<http://www.shakeout.org> Follow this link to get more information on the Great California Shakeout 10/21 at 10:21 a.m.

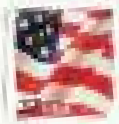
# November 2010 Election

## Around the Corner

**V**oting is easy. Register to Vote by Monday, October 18<sup>th</sup> to cast your ballot on **Election Day November 2<sup>nd</sup>**. Registered voters can request Vote by Mail ballots until October 26<sup>th</sup>. Visit: [www.sccvote.org](http://www.sccvote.org) to register. Find election material and find your polling place on election day at [www.smartvoter.org](http://www.smartvoter.org). Elections questions? Call the Gilroy City Clerk's Office (408) 846-0204



**SAVE YOUR STAMP.** The City Clerk's Office at City Hall is a designated drop off location for Santa Clara County "Vote by Mail" ballots for the November 2<sup>nd</sup> election. We are open M-Th. 8-5 at 7351 Rosanna Street.



# Community Calendar



## OCTOBER

- 1 City Offices Closed
- 2 William Weeks Buildings Walking Tour 10 am
- 4 City Council 6 pm
- 6 Gilroy Gang Task Force 6 pm
- 7 Planning Commission 6:30 pm
- 7 LWV Candidates Forum – Gavilan College 4 pm
- 8 City Hall Closed
- 11 Personnel Commission 5:30 pm
- 12 Arts & Culture Commission 5:30 pm
- 13 Library Commission 7 pm
- 14 Youth Commission Black Bear Diner 6 am
- 15 City Offices Closed
- 18 City Council 6 pm
- 19 Deadline to Register to Vote
- 19 Parks and Recreation Commission 6 pm
- 22 City Hall Closed
- 23 Coffee with the Mayor 9:30 am
- 26 Bicycle Pedestrian Commission 6 pm
- 27 Public Art Committee 5:30 pm

## NOVEMBER

- 1 City Council 6 pm
- 3 Gilroy Gang Task Force 6 pm
- 4 Planning Commission 6:30 pm
- 5 City Offices Closed
- 6 Old St. Mary Cemetery Walking Tour 10 am
- 8 Personnel Commission 5:30 pm
- 9 Arts & Culture Commission 5:30 pm
- 10 Library Commission 7 pm
- 11 Veteran's Day Holiday
- 12 City Hall Closed
- 13 Coffee with the Mayor 9:30 am
- 15 City Council Meeting 6 pm
- 16 Parks and Recreation Commission 6 pm
- 19 City Offices Closed
- 23 Bicycle Pedestrian Commission 6 pm
- 24 Public Art Committee 5:30 pm
- 25-26 Thanksgiving Day Holiday

## DECEMBER

- 1 Gilroy Gang Task Force 6 pm
- 2 Planning Commission 6:30 pm
- 3 City Offices Closed
- 6 City Council Meeting 6 pm
- 8 Library Commission 7 pm
- 10 City Hall Closed
- 11 Coffee with the Mayor 9:30 am
- 11 Breakfast with Santa 8:30 am
- 13 Personnel Commission 5:30 pm
- 14 Arts & Culture Commission 5:30 pm
- 17 City Offices Closed
- 20 City Council 6 pm
- 21 Parks and Recreation Commission 6 pm
- 22 Public Art Committee 5:30 pm
- 23-24 Christmas Holiday
- 28 Bicycle Pedestrian Commission 6 pm
- 31 New Year's Holiday

**Historical Society**

**FIRST SATURDAY OF THE MONTH**  
**10:00 AM - NOON (approximately)**  
**2010 Schedule Meet in front of the**  
**Gilroy Museum, 195 Fifth Street unless**  
**otherwise specified**

**October 2 WILLIAM WEEKS**  
**BUILDINGS**

**November 6 OLD ST. MARY CEMETERY**  
**(Meet in front of St. Joseph Family**  
**Center, 7950 Church Street)**

**December 4 No tour, holiday season**

**Your City Website**

The Portal to current City information of all types, with many links to other valuable local and regional information.

**www.cityofgilroy.org**

Questions or comments regarding this publication may be addressed to:  
Joe Kline, Public Information Officer  
City of Gilroy  
7351 Rosanna Street, Gilroy, CA 95020  
[Joe.kline@ci.gilroy.ca.us](mailto:Joe.kline@ci.gilroy.ca.us)  
408-846-0254  
This newsletter is published quarterly in January, April, July and October.