

# SOUTH COUNTY REENTRY RESOURCE CENTER



8425 Murray Avenue  
Gilroy, CA 95020

Monday – Friday  
8:00 am – 5:00 pm



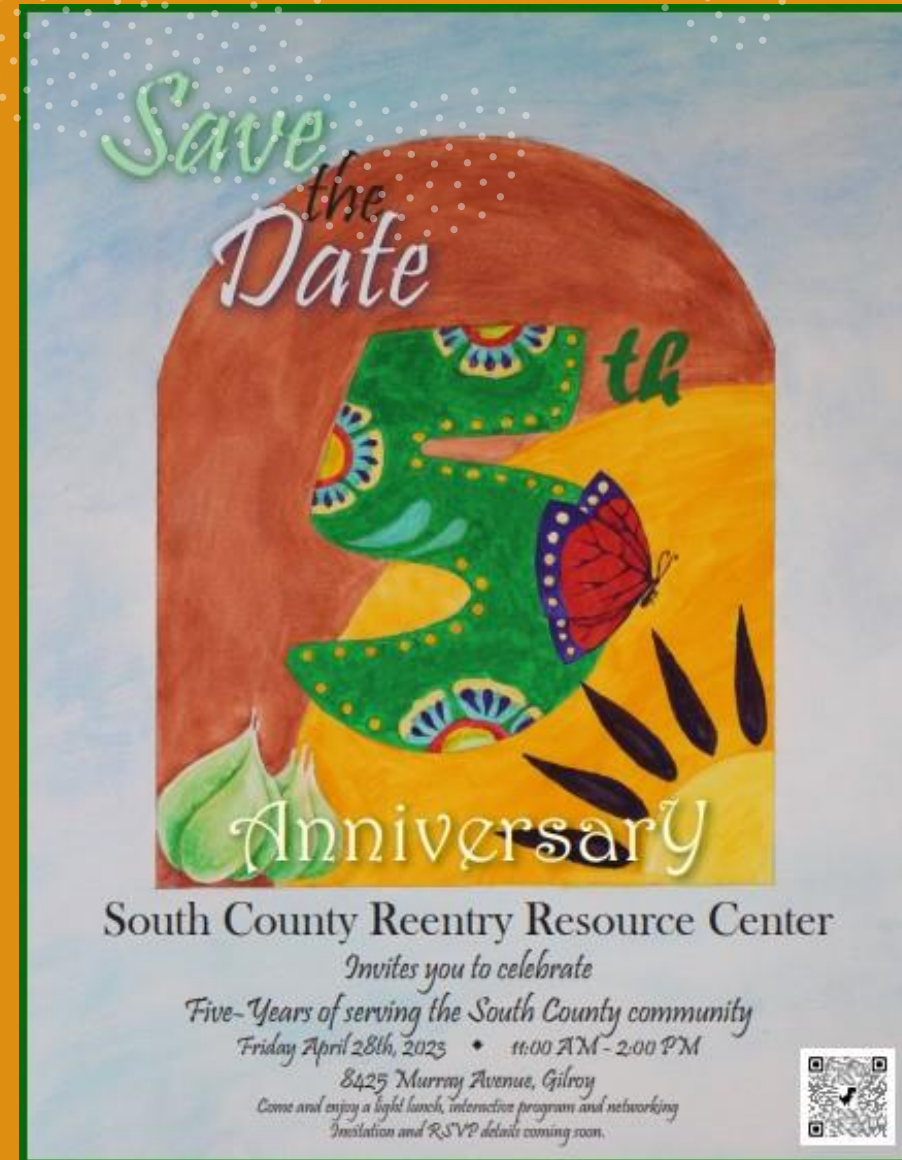
**Mission Statement:** To reduce recidivism and facilitate reentry by implementing evidence-based practices and partnering with a collaborative network of service providers and community supervision.

- In 2015 the Office of Reentry Services launched a satellite Reentry Resource Center in San Martin

- In 2018 we opened the South County Reentry Resource Center in Gilroy

- In 2023 we celebrated our 5<sup>th</sup> anniversary at our Gilroy location

*\*This flyer was hand painted in watercolor by our very own Community Outreach Specialist, Francis Nguyen.*




Save the Date

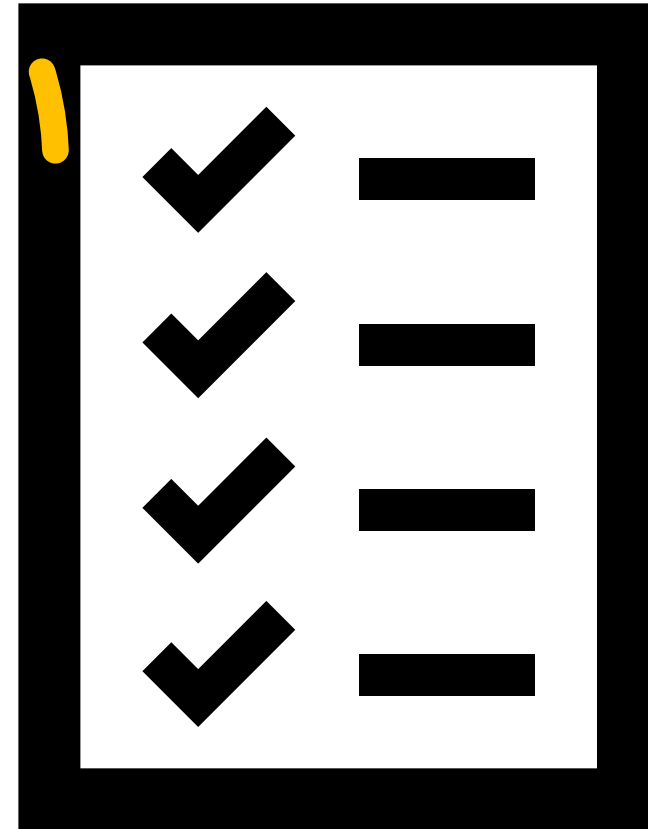
5<sup>th</sup>

Anniversary

South County Reentry Resource Center  
Invites you to celebrate  
Five-Years of serving the South County community  
Friday April 28th, 2023 • 11:00 AM - 2:00 PM  
8425 Murray Avenue, Gilroy  
Come and enjoy a light lunch, interactive program and networking  
Invitation and RSVP details coming soon.



- Are a resident of Santa Clara County
- Are currently or formerly incarcerated OR
- Are on any form of supervision (parole, probation, pre-trial) OR
- Have a pending criminal court case



# HOW IT WORKS

— what to expect



Sign-in at the security desk



Proceed to reception desk for triage and assessment



New clients will be provided registration paperwork, returning clients will be checked in



For new clients we address their immediate needs and request(s) based on the registration form responses and from a direct discussion with them



For returning clients, they often know what they need or have an appointment scheduled, and we address their needs and concerns as well



# **MEDICAL MOBILE UNIT**

**OPERATED by**

**“VHHP”**

**Valley  
Homeless  
Healthcare  
Program**

# Every Tuesday!

## 9:30am – 3:30pm

---

- Primary care
- Psychiatric services
- Rx
- No appointment required
- First come first served basis



# Shelter/Housing

## ➤ **Case Management**

- for qualified clients

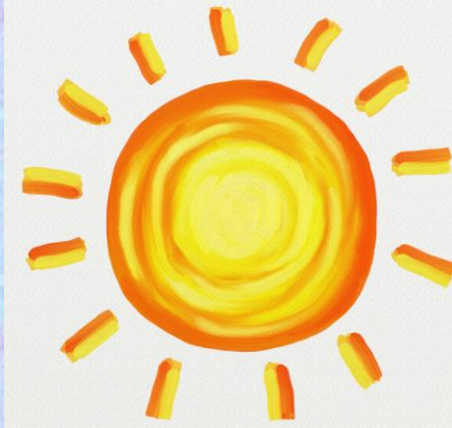
## ➤ **VI-SPDAT**

- vulnerability index – service prioritization decision assessment tool

## ➤ **HERE4YOU**

- Call center referrals
- Emergency shelter

## ➤ **Housing Resources and Information**



- **Behavioral Health Services Department Linkage**

- Mental health and substance use assessment and referral
- Outpatient substance use treatment services



## **ELIGIBILITY REQUIREMENTS**

- ✓ 18 yrs of age or older
- ✓ \*Not receiving case management or treatment that includes case management services
- ✓ Incarcerated for at least 30 days in a SCC Facility and scheduled for release within 45 days, with no permanent housing option in place and unemployed upon release

**OR**

- ✓ Released from custody within last 6 months unemployed and homeless



A Free Program Funded By  
Santa Clara County  
Office of Reentry Services

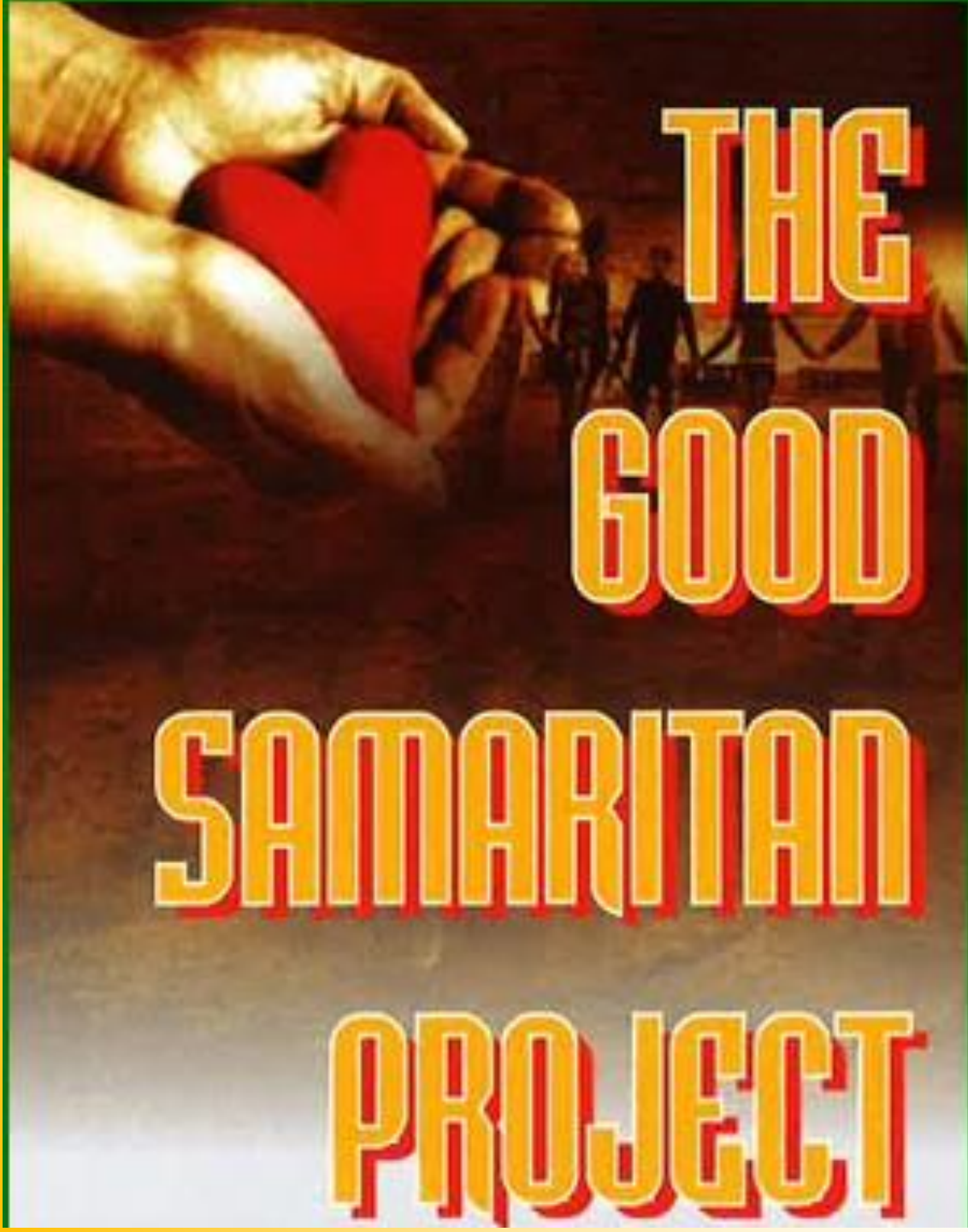


## **IN-CUSTODY SERVICES**

- ✓ 1 on 1 visits
- ✓ Develop post-release plan
- ✓ Complete VI-SPDAT
- ✓ Basic needs assistance upon release
- ✓ Linkage to RRC for G.A., EBT & Medi-Cal

## **POST-RELEASE SERVICES**

- ✓ Individual care plan
- ✓ Emergency clothing, food, hygiene kit
- ✓ Housing support services
- ✓ Employment assistance
- ✓ Weekly support group
- ✓ Transportation resources



# A Free Program Funded By Santa Clara County Office of Diversion & Reentry Services

## ➤ MISSION

- ✓ Educate youth and adults regarding the pitfalls of living a gang and drug lifestyle
- ✓ Assist those who are looking to find their way out of the gang and drug lifestyle
- ✓ Create alternative that will enhance their "new" lifestyle

## ➤ REQUIREMENTS

- ✓ Must be 18 yrs or older
- ✓ \*Recently released from incarceration
- ✓ Must be a resident of Santa Clara County, and living in San Jose, Morgan Hill, San Martin, or Gilroy

# San Jose State University Service Navigation Mentoring Program

Mentors connect clients to a wide range of services and help them meet immediate needs such as the following:

- Drug or alcohol recovery
- Transportation assistance
- Employment searches and readiness
- Food and benefits (e.g., EBT cards)
- Housing and shelter searches
- Education



# EXPUNGEMENT

## Public Defender's Record Clearance Program

- ❖ Have you ever been arrested?
- ❖ Are old convictions causing you problems?
- ❖ Do you owe fines & fees from criminal court cases?
- ❖ FREE & CONFIDENTIAL CASE CONSULTATIONS
- ❖ Walk-in hours available, no appointment required
- ❖ Last **TUESDAY** of the month, **9:00 am – 2:00 pm**

**PUBLIC DEFENDER OFFICE**  
**REENTRY EXPUNGEMENT PROGRAM**

HAVE YOU EVER BEEN ARRESTED?  
ARE OLD CONVICTIONS CAUSING YOU PROBLEMS?  
DO YOU OWE FINES & FEES FROM CRIMINAL COURT CASES?

**FIND OUT WHAT YOUR PUBLIC DEFENDER CAN DO FOR YOU!**  
**FREE & CONFIDENTIAL CASE CONSULTATIONS**

CALL **(408) 535-4290** & LEAVE A MESSAGE,  
EMAIL **EXPUNGEMENT@PDO.SCCGOV.ORG**,  
SCAN QR CODE & EMAIL  
OR STOP BY DURING WALK-IN HOURS

**MONTHLY SOUTH COUNTY WALK-IN HOURS**  
AT THE SOUTH COUNTY REENTRY SERVICES CENTER  
8425 MURRAY AVE, GILROY, CA 95020  
DROP-IN CONSULTS THE LAST TUESDAY OF EVERY MONTH

**9:00 AM - 2:00 PM**

ALL APPLICANTS MUST FINANCIALLY QUALIFY FOR FREE POST-CONVICTION SERVICES.  
A PARALEGAL WILL CONDUCT AN INTERVIEW TO DETERMINE ELIGIBILITY FOR FREE LEGAL ASSISTANCE.

SANTA CLARA COUNTY PUBLIC DEFENDER REENTRY EXPUNGEMENT PROGRAM  
151 W. MISSION STREET, SAN JOSE, CA 95110  
CALL OUR HOTLINE: **(408) 535-4290** & LEAVE A MESSAGE OR EMAIL US AT  
**EXPUNGEMENT@PDO.SCCGOV.ORG**

# DEPARTMENT of CHILD SUPPORT SERVICES

---

- **Parentage establishment**
- **Driver license suspension due to non-payment of support**
- **Support charged during incarceration**
- **Modifications of your support order**
- **Debt reduction program**
- **Adding your name to your child's birth certificate**



# ProBono Project

## Free Legal Advice on Civil Matters

THIS SERVICE IS OPEN ONLY TO REENTRY CLIENTS  
(FORMERMLY INCARCERATED COMMUNITY)

Pro Bono Project can help with child custody /  
visitation, child support, domestic violence,  
expungement, parentage and more.

Register at our office and get a referral for a phone  
consultation or a free 20-minute virtual  
consultation



EDUCATION RESOURCES AT THE  
OFFICE OF DIVERSION AND REENTRY  
San Jose & South County

JUSTICE FAMILY EDUCATION  
PROGRAM  
Santa Clara County Office of Education

WHAT WE **LEARN**  
BECOMES PART OF  
**WHO WE ARE**

### This program offers

- ✓ Free high school diploma attainment at Challenge Accepted School located at Reentry Center
- ✓ 1-on-1 coaching and academic advisor for clients looking to pursue high education needs
- ✓ Whole family advocacy and support
- ✓ Direct linkages to Reentry Offices and their community partners



Santa Clara County  
Office of Education

## Lissa Thiele

Education Coordinator  
Justice Involved Families  
Alternative Education



- ❖ **Educational opportunity for Reentry clients**
- ❖ **Certified Alcohol and Drug Counselor Peer Mentor Program**
- ❖ **Four courses over two semesters**
- ❖ **Certificate awarded upon successful completion**
- ❖ **Valuable credential**

- Skills Assessment
- Resume Development
- Job Match
- Interview Training
- Peer Mentor

Employment services to increase clients' employability and marketable skills through job readiness training, job search assistance, and job placement.

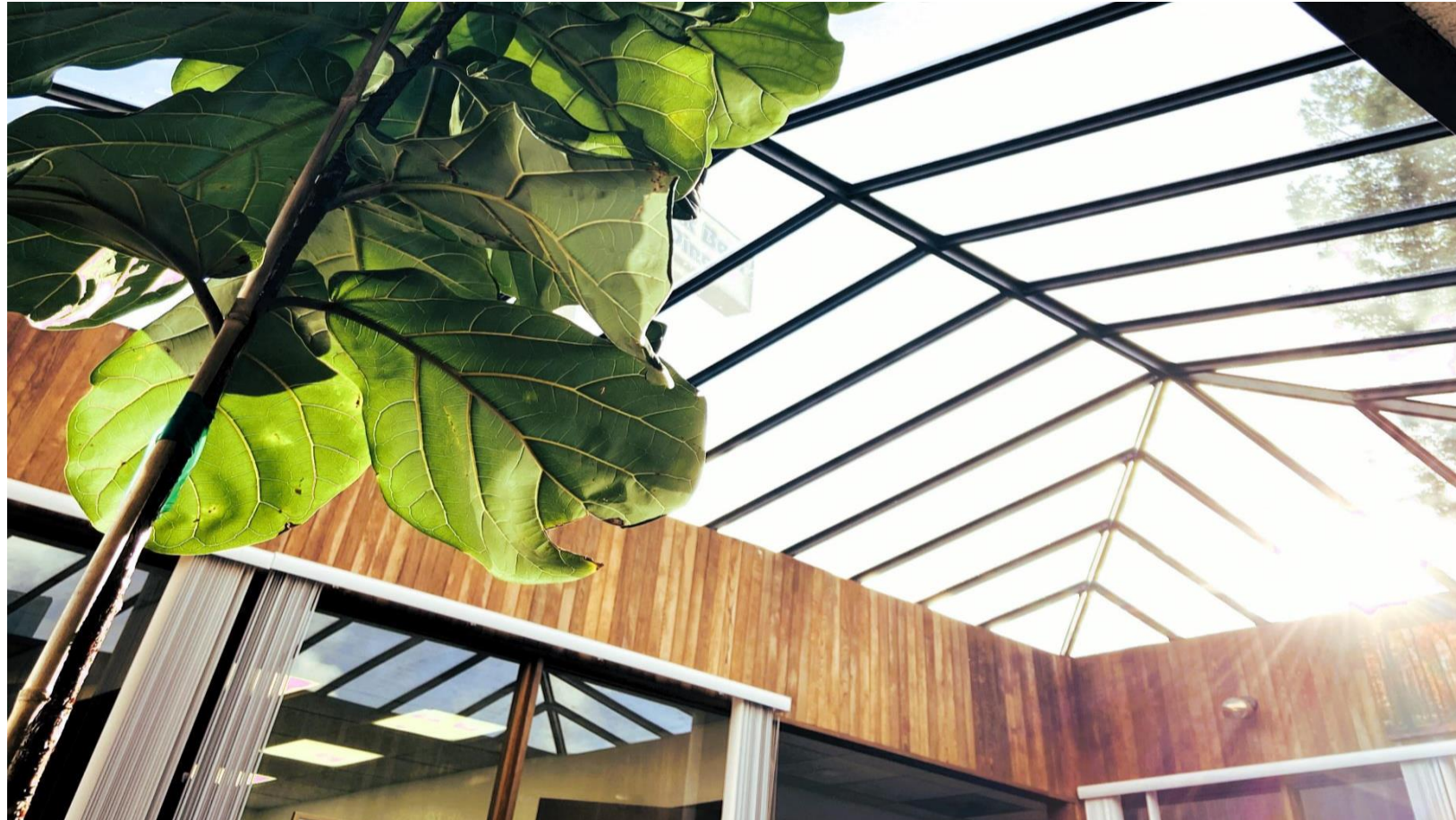


Catholic Charities  
of Santa Clara County

[CCSCC.ORG](http://CCSCC.ORG)



- **The NOW program:**
  - works exclusively with the Reentry population
  - By referral only
  - Works in unison with both Reentry Resource Centers
  - 2 paths to employment:
    - subsidized employment
    - 1 on 1 job placement assistance
  
- **They provide:**
  - Case management
  - Job coaching
  - Business development
  - Peer mentors
  - Personal Development



**“SKY’S THE  
LIMIT” in  
our  
office.....**

**That’s why  
we don’t  
have a  
normal  
roof!**