



St. Joseph's Family Center

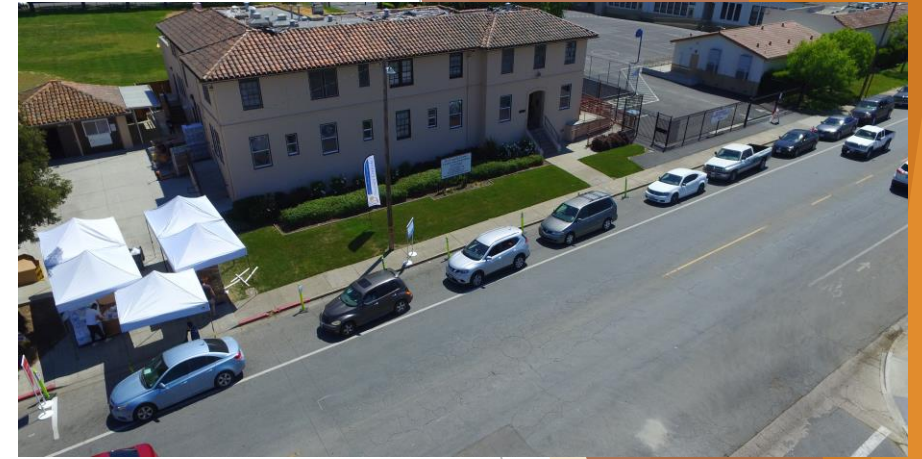
Our Mission:

To alleviate hunger and homelessness in South Santa Clara County by providing food, housing, case management and other supportive services, and advocating for system changes to improve the quality of life for the most vulnerable people in our community.

- ▶ Inception of organization dates back to the mid-1960's, although our organization was formally established in 1981
- ▶ Annual budget around \$13 million per year
- ▶ 15 staff (12 full-time, 3 part-time)
- ▶ Legion of community volunteers



- ❑ Programs and services offered at St. Joseph's Family Center (SJFC)
- ❑ Purpose of the program and services
- ❑ How they operate and who do they serve?
- ❑ Offer a glimpse into the poverty that affects South County



Food Assistance

- ❑ Tuesdays and Thursdays from 8:00am - 2:30pm
- ❑ Drive through/walk through service; average of 800+ households per day
- ❑ Weekly distribution available; self-declaration of meeting income guidelines; register online
- ❑ Daily bag lunch for the homeless Monday-Friday
- ❑ Operates with the support of staff and volunteers
- ❑ SJFC currently recovers/rescues food from over 30 retailers, making SJFC the largest recovery agency in the county (except for Second Harvest of Silicon Valley)



SECOND HARVEST
of SILICON VALLEY

- ❑ Second Harvest of Silicon Valley
 - Protein
 - Milk/Eggs
 - Fruit/Vegetables
 - “Core” staple items/canned goods/sundries
- ❑ Grocery Rescue/Local Farms/Community Donations
 - Costco/Walmart/Trader Joe’s/Safeway/Nob Hill/Target/etc.
 - Individual donation drop-offs
 - Backyard produce
 - Village Harvest (harvesting of larger properties, usually fruit like persimmons, plums, citrus)
 - Community food drives
- ❑ Grants
 - Purchase of food items to fill gaps and supply chain issues





Homeless Prevention/Financial Assistance

- ❑ Assist financially, predicated by a crisis caused by circumstances beyond their control (loss of employment, unexpected financial hardship)
- ❑ Deposit, 1st month's rent
- ❑ Past due rent
- ❑ Primarily assist South County communities (Gilroy, San Martin, Morgan Hill) and are part of the County-wide Homeless Prevention Network. The HPS network operates on a "no wrong door" policy when possible
- ❑ Documentation/verification requested to validate the financial crisis
- ❑ HPAT vulnerability assessment performed on each applicant household
- ❑ Agency works with Season of Sharing and HIF for additional supports

St. Joseph's Family Center Homeless Prevention Assistance	FY 2017- 2018	FY 2018- 2019	FY 2019- 2020	FY 2020 - 2021	FY 2021- 2022	FY 2022- 2023	FY 2023- 2024	Average
Total unduplicated households	183	132	249	279	208	243	187	212
Total financial assistance/dollars	276,586	240,354	691,272	533,361	387,700	676,084	523,728	475,583
Average assistance per household	1,511.40	1,820.86	2,776.19	1,911.69	1,863.94	2,782.24	2,800.68	2,210.00
% stably housed after assistance	94%	93%	93%	93%	92%	94%	94%	93%



Our New Place

- ❑ St. Joseph's Family Center works with Santa Clara County's Office of Supportive Housing, and the Continuum of Care (CoC), to help identify families who are survivors of domestic violence, and are coming from a temporary shelter or place not meant for human habitation
- ❑ Permanent Supportive Housing (PSH) for Survivors of Domestic Violence/Chronically homeless; currently serving 27 households
- ❑ Alignment with "Housing First" principles
 - Not screened for having "too little or no income"
 - Having a criminal record, history of domestic violence
 - Active, or history of, substance use or substance use disorder
 - Termination from the program only in rare circumstances (excessive lease violations, threats or harm to staff, other tenants, etc.)
- ❑ Referrals through Coordinated Assessment only
- ❑ Scattered-site housing throughout South County





Interim Housing

- ❑ Contracts with the Office of Supportive Housing and Destination: Home to provide interim/temporary housing for unhoused families who have received a housing voucher, but need time and shelter to help stabilize; may also include families impacted by disasters, code enforcement, etc.
- ❑ Referrals only from Santa Clara County designated representatives
- ❑ Work with other provider agencies to help secure permanent housing (housing search, application assistance, rental assistance, negotiations with landlords/property owners)





Cold Weather Shelter Program (CWSP) - Ochoa

- ❑ Serves 35-40 households with at least one minor dependent
- ❑ Program utilizes vacant agricultural worker housing during the winter months, typically three months (mid-December through mid-March)
- ❑ Referrals from the Here4You hotline and from South County community partners
- ❑ Shelter offers case management, childcare, enrichment activities, housing readiness efforts, mobile medical services, referrals, linkages to other community services and benefits screenings



Homeless Services Program



- Basic Needs Provision
 - Unhoused Outreach
- Individualized Support
 - Case Management
- Transitional Respite
 - Safe Parking Program
- Provider Collaboration
 - Armory, The Salvation Army & Gavilan College

Mobile Outreach



- Popups and encampment outreach for basic needs including food, clothing, mail, and hygiene supplies
- Shower and laundry at The Salvation Army
- Medical van
- Personal case planning
- Creek Cleaning
- Referrals to other services

Case Management



- Building trust dissolves barriers
- Personalized Needs Assessment
- Housing Assessment (ViSPDAT)
- Health and Service Referrals
- Housing readiness intervention
- Housing retention
- Wrap-around care & advocacy

Safe Parking Program



- Stepping-stone toward permanent housing
- RVs, Tiny Homes, and community facilities
- Intensive one-on-one coaching and support toward self-sufficiency
- 58% have found permanent housing (135+ since inception)
- Have opened a Gilroy site

Other Programs & Collaborations



- Case Management at Gavilan
- Unhoused creek cleaning and waste removal with Valley Water
- Medical, dental and vision referrals through Valley Medical and Gardner Health
- County-wide liaison for South County Homeless issues

Future endeavors



- Expanded outreach to Morgan Hill
- Self-help Legal assistance program
- 12-step hub for substance dependency
- Expanded Health Navigation for serious chronic conditions
- Homeless Problem Solving
- Unhoused-led advocacy



What Makes Us Unique?

Our services for those experiencing homelessness, or who are unhoused, cover many areas in the spectrum of care.

We currently provide homeless prevention, permanent supportive housing, interim housing, emergency shelter, outreach, and case management - maybe the only agency in Santa Clara County to do so?



Gilroy Street Team

- ❑ Formed from a county-wide effort to emulate the success of the “Downtown Streets Team” in Palo Alto.
- ❑ City-wide beautification program, graffiti abatement, assist code enforcement officers, special projects for non-profits and community events
- ❑ Works with unhoused individuals, formerly homeless, & court referrals
- ❑ Participants receive an hourly stipend, case management, job readiness training, housing search assistance and other supports



garbage collection

Transportation Assistance

- ❑ **Transit Assistance Program (TAP)**
 - Monthly Adult Flash Pass through Valley Transportation Authority (VTA) since 2012
 - Steeply discounted pass for low-income individuals
 - Limited number of passes

- ❑ **UPLIFT**
 - Three-month pass through VTA and the County of Santa Clara
 - Unhoused and homeless only
 - Enrollment includes “light” case management
 - Limited number of passes





On the Horizon

- ❑ Intensify our work and collaboration with the Emergency Assistance Network (EAN), including a Theory of Change. This county-wide focus will be convened and supported by the United Way Bay Area
- ❑ In the spring of 2024, SJFC announced our plans to “join forces” with the South County Compassion Center. As the surviving entity, this merger will solidify our footprint in South County, and add another component of services to those experiencing homelessness (outreach, case management and providing critical resources in areas where they reside.) The merger will complete on June 30, 2025.
- ❑ We also plan to rebrand the newly formed agency to align with our EAN partners. Our new agency will be named “South County Community Services.”



South County
**COMMUNITY
SERVICES**

ANY
QUESTIONS
?